

# EDZELL CASTLE EXPLORER QUIZ

Explore our castle with this fun fact-finding mission.  
Remember to ask the steward if you need any help.



What was once in these panels above the main entrance?



Which family built Edzell Castle?



Which part of the castle did the lord and lady live in?



How many windows did the great hall have?



Which queen held a meeting here in 1562?



A boy once kept meat turning in front of a hot fire. What was he called?





7

How many carved panels can you count in the garden?



8

Find one of a lady with a bird on her head. What's her name?



9

The summerhouse was built in 1604. How long ago was that?



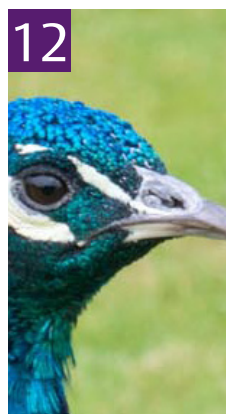
10

In the summerhouse seven panels depict gods of the planets. Which two aren't planets at all?



11

How many gunholes can you count upstairs in the summerhouse?



12

What type of bird can sometimes be seen walking in the gardens at Edzell?

1. Around the far side of the castle from today's entrance. 2. Look on the information panels. A burial aisle nearby is named after them. 3. It's the tallest! 4. It has no roof today, but it was once a very grand room. 5. Information panel. 6. On the information panel in the kitchen 7. All around the walls. 8. That would be telling! 9. Minus 1608 from the year now! 10. Their names sound a bit different to what we usually call them... 11. Under the windows. 12. They're famous for their impressive fanned-feathers.

Need a clue? Look here...

