

Corgarff Castle

Explorer Quiz



Find out about the castle and people who lived here as you explore.

Remember to ask the steward if you need any help.



The castle is surrounded by a star-shaped wall. How many points does it have?



Where did people get water from?



Three main things were made in the building next to the tower. What were they?

Whisky

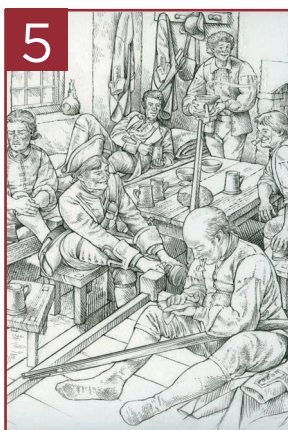
Cheese

Bread

Beer



How many beds are in the barrack room?



What colour jackets did the soldiers wear?



What number is on the bags in the barrack room?





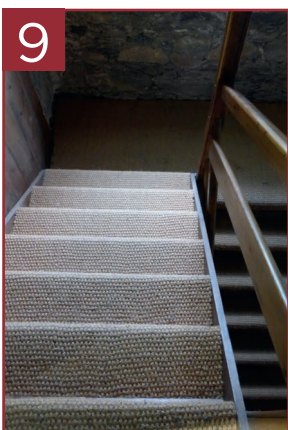
7

What did people burn on the fires?



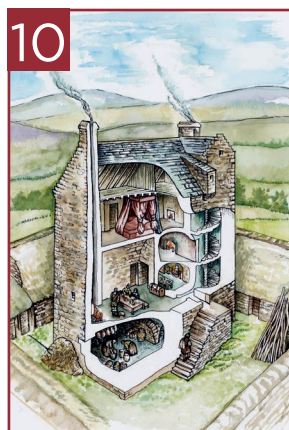
8

Look for a decorated fireplace. What animals are on it?



9

How many stairs do you have to climb to get to the top of the tower?



10

Corgarff was built around 1550. How long ago is that now?

11 Draw one of the marks found on the barrack room ceiling.

12 Birds, deer and hares live near Corgarff. Draw your favourite one of these animals below.

Well done! Remember to collect your free sticker from the steward.

Need a clue? Look here...
 1. outside the castle; 2. courtyard; 3. west pavilion/brewhouse; 4. barrack room;
 5. anywhere there are soldiers; 6. barrack room; 7. kitchen; 8. shop/officers;
 9. tower house; 10. that'd be telling!; 11. barrack room; 12. Bird, deer or hare – the choice is yours!

