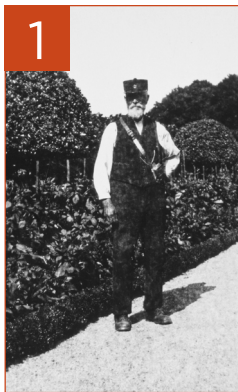


# Dirleton Castle

## Explorer Quiz

Explore our castle with this fun, fact-finding mission and uncover clues in the most unexpected places.

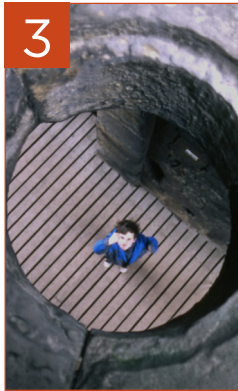
Remember to ask a steward if you need any help.



Dirleton is famous for its beautiful gardens. Can you name the gardener in 1923?



Ridges on the outside of the doocot stopped rats climbing in. How many ridges are there?



Look up going through the entrance. How many holes are there above your head?



Three families owned Dirleton Castle. Can you name them?

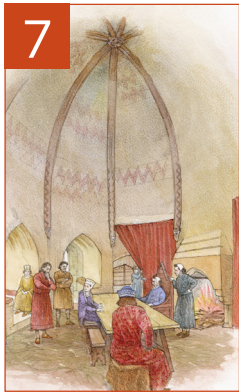


Holes in the dining room wall held beams, which supported the ceiling. How many beam holes can you count?



There was once a cupboard in the dining room, which had shelves in it. How many shelves were there?





7

The most comfortable room in the castle is a funny shape. How many sides has it got?



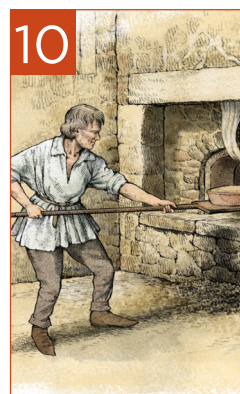
8

Braziers, or fire buckets, once warmed the lord's bed chamber. But where did the smoke go?



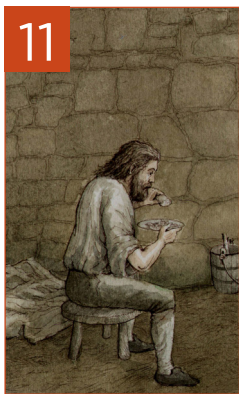
9

Dirleton had a well to provide fresh water for its residents. How deep was it?



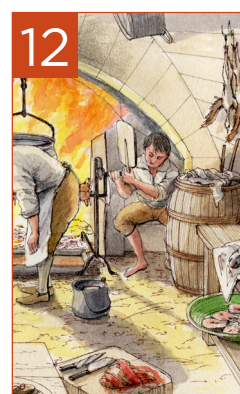
10

Bread was a very important food. How many large round ovens was it cooked in?



11

Explore the castle's prison. What luxury did rich prisoners have that poor prisoners didn't?



12

It was a boy's job to keep meat turning over the huge kitchen fires. What was he called?

**Need a clue?** Look in these places:  
1. Welcome panel; 2. Doocot; 3. Doocot; 4. One Castle, three families panel by drawbridge; 5. Dining room; 6. Dining room; 7. De Vaux Range; 8. De Vaux Range; 9. De Vaux Range; 10. Cellars; 11. Prison; 12. Kitchen

