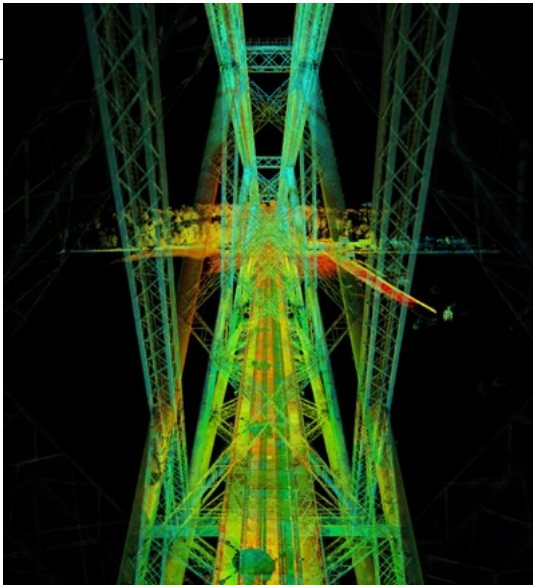
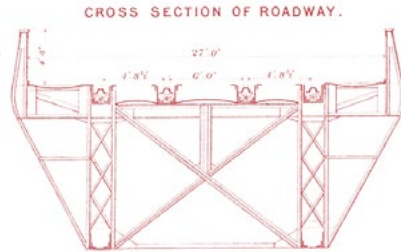


WHERE CAN I FIND OUT MORE?

For downloadable information, details of special events and information on educational resources, see the websites listed on the back of this leaflet.



Forth Bridge, point cloud data

FURTHER INFORMATION

THE FORTH BRIDGES FORUM

Contact and Education Centre, South Queensferry, Edinburgh EH30 9SF
Email: FBF.enquiries@amey.co.uk
www.forth-bridges.co.uk/forth-bridge/world-heritage

FIFE COUNCIL

Douglas A Speirs, Archaeologist,
Fife Council, Kingdom House,
Glenrothes, Fife KY7 5LY
Tel: +44 (0)3451 555 555
Email: douglas.speirs@fife.gov.uk
www.fifedirect.org.uk

CITY OF EDINBURGH COUNCIL

Waverley Court, 4 East Market Street,
Edinburgh EH8 8BG
Tel: +44 (0)131 529 3510
Email: worldheritage@edinburgh.gov.uk
www.edinburgh.gov.uk

NETWORK RAIL

www.networkrail.co.uk

GO FORTH! DIGITAL LEARNING RESOURCES

Online digital learning resources on the Forth Bridge at www.theforthbridges.org/visit/go-forth-digital-learning-resources/

FORTH BRIDGE VISITOR EXPERIENCE

Network Rail is considering ways of providing visitor access to the Forth Bridge. More information and 360 tour can be found at www.forthbridgeexperience.com

NATIONAL RECORDS OF SCOTLAND

Original progress photographs taken during the construction of the Forth Bridge as well as other associated railway records can be found at www.nrscotland.gov.uk/research/image-gallery/railways

HISTORIC ENVIRONMENT SCOTLAND

www.historicenvironment.scot

BOAT TOURS

A number of operators offer tours, including **Forth Tours: www.forthtours.com**

Tel: +44 (0)870 118 1866

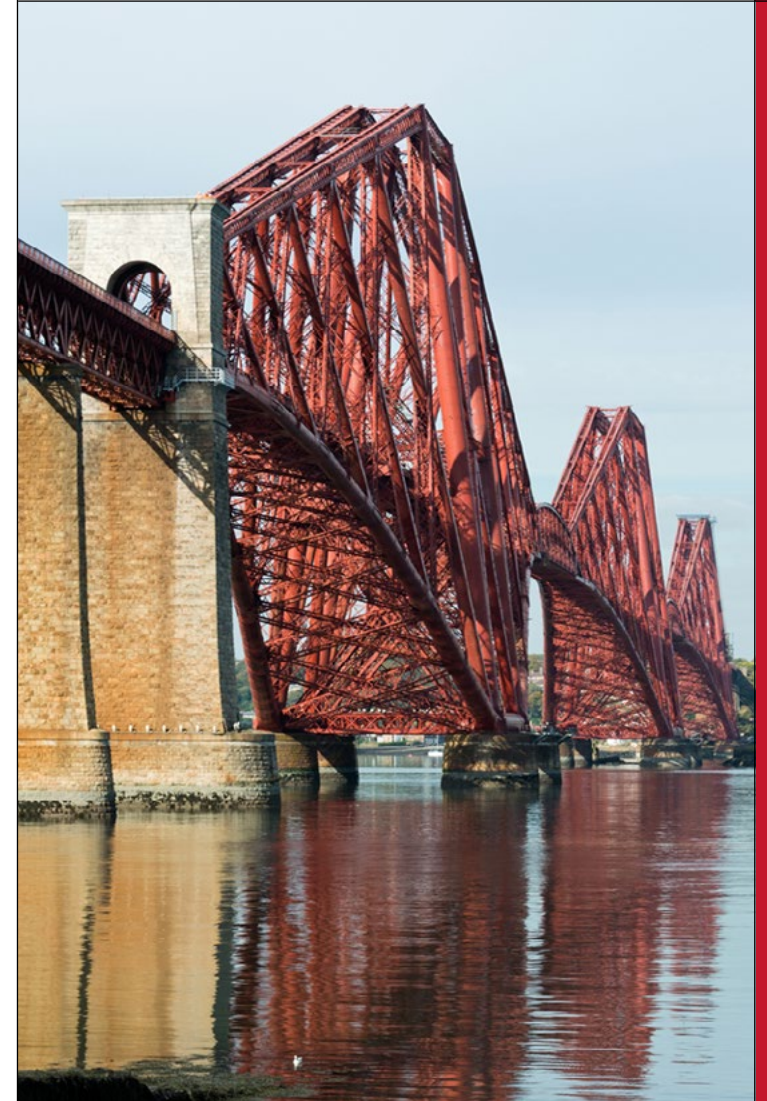
Maid of the Forth: www.maidoftheforth.co.uk

Tel: +44 (0)131 331 5000



Produced by Historic Environment Scotland. Images © Crown Copyright HES unless otherwise specified
Front cover: The Forth Bridge
© Historic Environment Scotland - Scottish Charity No. SC045925

THE FORTH BRIDGE



OGL You may re-use this information (excluding logos and images) free of charge in any format or medium, under the terms of the Open Government Licence v3.0 except where otherwise stated.



World Heritage Site

The great steel span of the Forth Bridge carries the railway across the estuary of the River Forth. Two and a half kilometres long and 110 metres high, it represents the pinnacle of 19th-century bridge construction, and is the world's greatest cantilever trussed bridge. When opened in 1890 it had the longest bridge spans in the world. It was also the world's first major mild steel structure, and today remains a potent symbol of the UK's industrial, scientific, architectural and transport heritage.

WHAT MAKES THE BRIDGE SO IMPORTANT?

The Bridge is a masterpiece of human creative genius and an aesthetic triumph – it avoids decoration and yet achieves tremendous grace for something so solid. Its steel-built cantilever design was an innovative solution to crossing a natural barrier of a scale and depth that had never previously been spanned. It is an outstanding example of its kind and illustrates a significant stage in human history, a revolution in transport and communications.

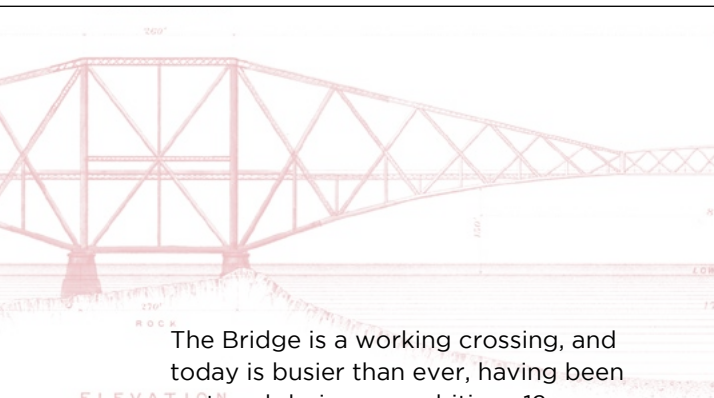
The Railway Age, of which it is a powerful symbol, was made possible by, and in turn influenced the speed and connectivity of the Industrial Revolution. The Bridge is a unique milestone in the evolution of bridge and other steel construction. It is innovative in its design, concept, materials, and in its enormous scale. It marks a landmark event in the application of science to architecture.

The Bridge has featured in a huge range of advertising, popular imagery, literature and film.

WHAT CAN I SEE AND DO TODAY?

Spectacular views of the Forth Bridge can be gained from both sides of the Forth estuary – in and around the historic town of Queensferry south of the river, and the village of North Queensferry in Fife. Both offer cafes, pubs and restaurants. Boat tours on the Forth are available, and there are excellent cycling and walking routes along the coast.

Both ends of the Bridge can easily be reached by public transport. Trains call regularly at North Queensferry and Dalmeny Stations (the latter requiring a walk via local pathways or a short journey on a local bus service). Queensferry can be reached by bus from the centre of Edinburgh. If travelling by car be aware that parking in Queensferry and North Queensferry is limited and at times traffic can be heavy.



The Bridge is a working crossing, and today is busier than ever, having been restored during an ambitious 12 year refurbishment programme, completed in 2011. The Forth Bridge was inscribed on the World Heritage List in 2015.



Close to the Forth Road Bridge offices on the south side, the Forth Bridges, Contact and Education Centre is available for group visits, which should be booked in advance. It is also open to the general public on Saturdays from 10.00-16.00. The Centre hosts an exhibition and education space with an excellent view of all three Forth Bridges, including the adjacent Forth Road Bridge (completed in 1964) and the Queensferry Crossing (completed in 2017).

For more information, contact:
frcenquiries@transportscotland.gsi.gov.uk
or phone +44 (0)800 078 6910.