

NEW LANARK



World
Heritage
Site

A Short Guide

April 2023



CONTENTS

Introduction	1
New Lanark WHS: Key Facts	2
The World Heritage Site and Buffer Zone	3
Statement of Outstanding Universal Value	5
Managing New Lanark	6
Planning and New Lanark WHS	8
Further Information and Contacts	10

INTRODUCTION

This short guide is an introduction to New Lanark World Heritage Site (WHS), its inscription on the World Heritage List, and its management and governance. It is one of a series of Site-specific short guides for each of Scotland's six WHS.

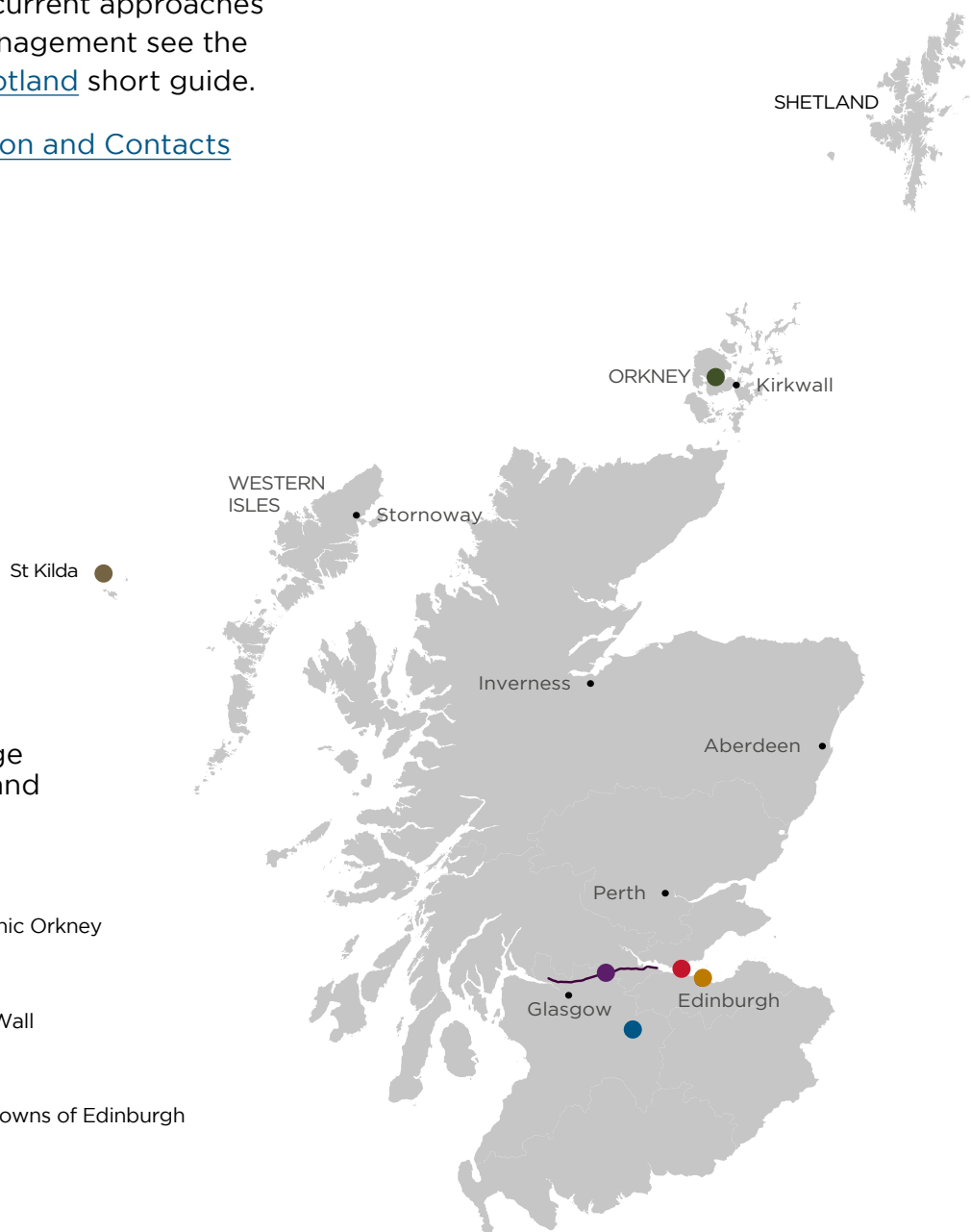
For information outlining what World Heritage status is and what it means, the responsibilities and benefits attendant upon achieving World Heritage status, and current approaches to protection and management see the [World Heritage in Scotland](#) short guide.

See [Further Information and Contacts](#) for more information.

World Heritage Sites in Scotland

Key

- 1 Heart of Neolithic Orkney
- 2 St Kilda
- 3 The Antonine Wall
- 4 **New Lanark**
- 5 Old and New Towns of Edinburgh
- 6 Forth Bridge



NEW LANARK WHS: KEY FACTS

- Inscribed on the World Heritage List in 2001 as a cultural WHS.
- New Lanark is a small 18th century village set in a sublime Scottish landscape where the philanthropist and Utopian idealist Robert Owen moulded a model industrial community in the early 19th century.
- The village is a remarkable well preserved example of an early industrial settlement.
- The integration of planning and architecture with a humane concern on the part of employers for the well-being of workers is a milestone in social and industrial history.
- New Lanark village remains a thriving community with a resident population, visitor centre, a hotel and a range of small businesses.
- The New Lanark Trust, which owns much of the WHS, is committed to supporting the restoration and development of the village.



Robert Owen's house.



*Street view of New Lanark in the 1890s;
© New Lanark Trust.*

THE WORLD HERITAGE SITE AND BUFFER ZONE

NEW LANARK

New Lanark is an exceptional example of a purpose-built 18th century restored cotton mill village on the banks of the River Clyde, close to the Falls of Clyde in Southern Scotland. It was transformed under the management of Robert Owen who applied his form of benevolent paternalism in industry and formulated his Utopian vision of a society without crime, poverty, and misery.

The village was founded in 1785, and the cotton mills, powered by water-wheels, were operational from 1786 to 1968. By 1799, New Lanark was the biggest cotton mill in Scotland and formed one of the largest factory sites in the world. Over 2,000 people lived or worked in the village. The mill continued manufacturing cotton for nearly 200 years, until 1968. This helps explain why the buildings in the village are so little changed.

The creation of the model industrial settlement at New Lanark was a milestone in social and industrial history. The moral, social and environmental values which underpinned Robert Owen's work at New Lanark provided the basis for seminal material and intangible developments that have had lasting influences on society over the past two hundred years.

The nature and layout of New Lanark inspired other benevolent industrialists to follow his example, and this movement laid the foundations for the work of Ebenezer Howard in creating the concept of the Garden City. The social and economic systems that Owen developed were considered radical in his own time but are now widely accepted in modern society.



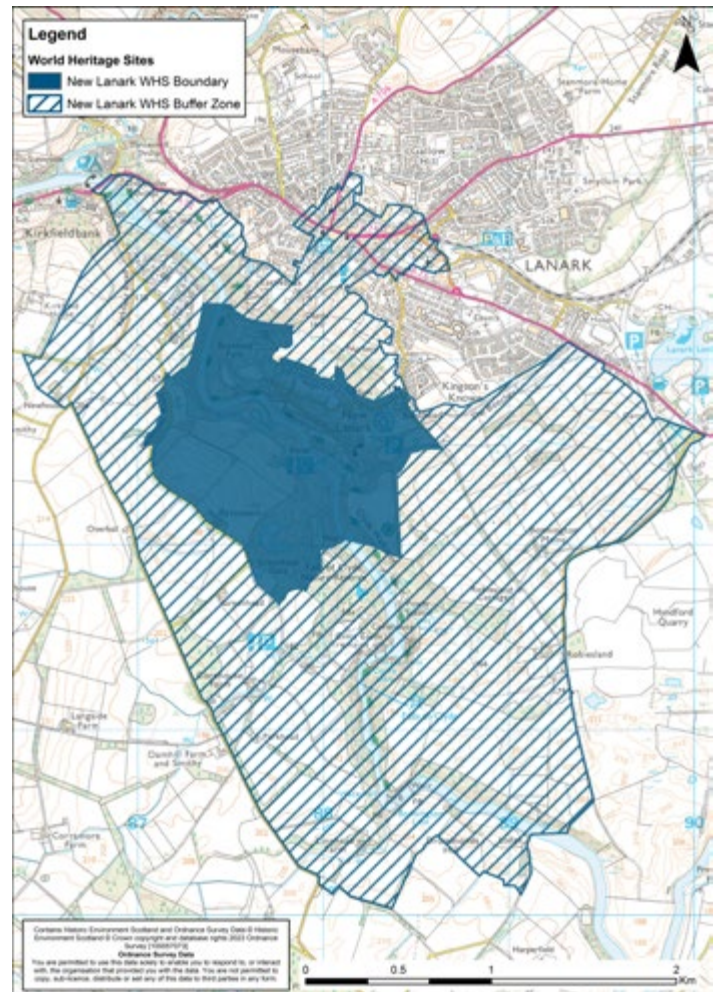
Mill one and waterhouses.



New Buildings Clock Tower.

THE BUFFER ZONE

The buffer zone is designed to comply with UNESCO guidance that buffer zones should include the immediate setting of the inscribed Site, important views, and other areas or attributes that are functionally important as a support to the Site and its protection. It takes account of key views into and from the Site as well as important relationships between the Site and other buildings and land in the surrounding area. The purpose of the buffer zone is to indicate areas where development proposals require careful consideration by developers and decision-makers to determine whether they are likely to significantly impact the WHS, its Outstanding Universal Value (OUV), or its authenticity and integrity.



New Lanark WHS (shaded) and buffer zone (hatched).

New Lanark from across the Clyde.



STATEMENT OF OUTSTANDING UNIVERSAL VALUE

Each WHS has a Statement of Outstanding Universal Value (SOUV). This provides a clear understanding of the reasons for the Site's inscription on the World Heritage List, and details what needs to be managed in order to sustain the OUV for the long term.

The SOUV describes the WHS and its importance, lists the criteria for inscription on the World Heritage List, explains how the WHS satisfies UNESCO's requirements for Authenticity and Integrity, and summarises the management requirements.

CRITERIA

To be included on the World Heritage List, Sites must meet at least one out of ten selection criteria, as explained in UNESCO's [Operational Guidelines for the Implementation of the World Heritage Convention](#). The Criteria under which New Lanark is inscribed on the World Heritage List are:

Criterion (ii): *Exhibit an important interchange of human values, over a span of time or within a cultural area of the world, on developments in architecture or technology, monumental arts, town-planning or landscape design.*

When Richard Arkwright's new factory system for textile production was brought to New Lanark the need to provide housing and other facilities for the workers and managers was recognised. It was there that David Dale and Robert Owen created a model for industrial communities that was to spread across the world in the 19th and 20th centuries.

Criterion (iv): *Be an outstanding example of a type of building or architectural or technological ensemble or landscape which illustrates (a) significant stage(s) in human history.*

New Lanark saw the construction not only of well designed and equipped workers' housing but also public buildings and landscaped areas designed to provide for their educational and recreational needs, as well as their physical health and well-being.

Criterion (vi): *Be directly or tangibly associated with events or living traditions, with ideas, or with beliefs, with artistic and literary works of outstanding universal significance.*

The name of New Lanark is synonymous with that of Robert Owen. His social philosophy in matters such as progressive education, factory reform, humane working practices, international cooperation, and garden cities, was to have a profound influence on social developments throughout the 19th century and beyond.

MANAGING NEW LANARK

KEY MANAGEMENT PARTNERS

The partners in managing the New Lanark WHS are the [New Lanark Trust](#) (NLT), [Historic Environment Scotland](#) (HES), and [South Lanarkshire Council](#) (SLC).

A Partnership Group composed of representatives of all the partner organisations coordinates and implements the aims and objectives set out in the WHS Management Plan. The NLT owns and manages most of the New Lanark WHS, while the other partner organisations are involved in the wider management of the WHS and buffer zone.

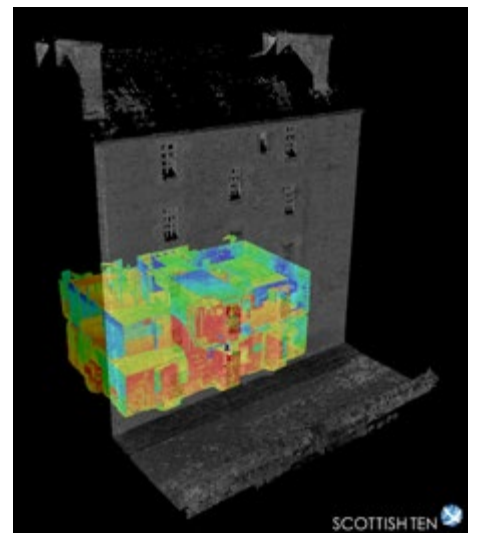
A WHS coordinator: ensures effective liaison between the partners; supports the implementation, monitoring and revision of the Management Plan and associated action plan; promotes the OUV and public benefit of the WHS; increases awareness and understanding among partners, stakeholders and the public; and serves as a central point for advice.

Caithness Row



Mill wheel © New Lanark Trust.

Museum Stair © Centre for Dig.ital Documentation and Visualisation.



THE MANAGEMENT PLAN

The New Lanark Management Plan is a framework document for the preservation of the OUV of the WHS. It sets out how the Site will be managed by identifying a series of key issues and devising specific objectives or actions to address these issues. It is developed collaboratively by the partners, bodies who have a role in actively managing the Site and access to it. It is accompanied by an action plan that sets out objectives designed to help address the issues identified in the Management Plan and describes the methods for monitoring the objectives.

ICOMOS advises that Management Plans for WHS should be based on a strategic view over 30 years. The vision statement expresses the longer term aspiration for the New Lanark site, based on the need to conserve, enhance and interpret the significance of New Lanark WHS, and on the key stakeholder issues that have been identified.

The Management Plan sets out six long term aims to guide future decision making, considers some of the key issues for each of them and identifies medium term objectives to meet the longer term aims.

THE VISION

New Lanark is one of the UK's best World Heritage Sites and a very successful visitor attraction. As an accessible, enjoyable, successful and sustainable destination, it demonstrates and encourages best practice in every relevant field. Visitors from local and global audiences come to celebrate, reflect and learn about the site, its associations with Robert Owen and its wider industrial heritage context. It is also a thriving community where local people live and work with pride. The site managers and partners work together with the community, landowners and businesses to promote and interpret the importance of the site's Outstanding Universal Value and to safeguard this by managing, conserving and protecting the important build heritage and cultural and natural landscape.



View of New Lanark from the Clyde walkway.

PLANNING AND NEW LANARK WHS

World Heritage designation does not result in additional direct legal protection. Instead, New Lanark is protected through the planning system and the designation of Listed Buildings and a Conservation Area.

Scotland's National Planning Framework 4 requires planning authorities to only support development proposals where the Outstanding Universal Value of a WHS or its setting is protected and preserved.

The Historic Environment Policy for Scotland sets out a series of principles and policies for the recognition, care, and sustainable management of the historic environment.

A series of thematic Managing Change Guidance Notes produced by HES provides best practice advice to help guide changes to the historic environment. One of the guides focuses on [World Heritage](#). It should be used to inform planning policies and help with decisions relating to planning applications affecting the WHS.

The site falls entirely within the New Lanark Conservation Area, the boundary of which it partly shares. Any development in a Conservation Area must preserve or enhance the special character of the area, as set out in their respective character appraisals.

New buildings, the Counting House and K6 phone box.



*New Lanark workers;
© New Lanark Trust.*



*Falls of Clyde
Visitors Centre.*

South Lanarkshire Council Local Development Plan establishes the main principles of the policy to protect the WHS and its setting from inappropriate development. This is a material consideration in the planning process. The central aim is to protect the 'critical heritage capital' of the WHS, which are those features which are irreplaceable, such as the listed buildings and skylines.

SUMMARY OF RELEVANT LEGISLATION, POLICY AND GUIDANCE:

- Our Place in Time – The Historic Environment Strategy for Scotland (2014)
- The Town and Country Planning (Scotland) Act 1997 as amended by the Planning etc. (Scotland) Act 2006
- National Planning Framework (2023)
- Planning Advice Note 2/2011 Planning and Archaeology
- Historic Environment (Amendment) Scotland Act 2011, which amends three pieces of primary legislation
 - The Historic Buildings and Ancient Monuments Act 1953;
 - The Ancient Monuments and Archaeological Areas Act 1979; and
 - The Planning (Listed Buildings and Conservation Areas) (Scotland) Act 1997
- Historic Environment Policy for Scotland (HEPS) (2019)
- Managing Change in the Historic Environment Guidance Notes, HES
- South Lanarkshire Council Local Development Plan



Heron on the River Clyde.



*Dyeworks and
the River Clyde*

FURTHER INFORMATION AND CONTACTS

NEW LANARK COORDINATOR
NEW LANARK TRUST

Email: trust@newlanark.org

Tel: +44 (0)1555 661345

KEY LINKS

New Lanark website:
www.newlanark.org

UNESCO World Heritage Centre
– World Heritage List: New Lanark WHS:
whc.unesco.org/en/list/429

New Lanark WHS on the HES website:
www.historicenvironment.scot/new_lanark

For planning policies related to the WHS see
the South Lanarkshire Council development
plans page:
[www.southlanarkshire.gov.uk/info/200145/
planning_and_building_standards/39/
development_plans](http://www.southlanarkshire.gov.uk/info/200145/planning_and_building_standards/39/development_plans)



You may re-use this information (excluding logos and images)
free of charge in any format or medium, under the terms of the
Open Government Licence v3.0 except where otherwise stated.

Produced by Historic Environment Scotland.
Images © Crown Copyright HES unless otherwise specified
© Historic Environment Scotland - Scottish Charity No. SC045925