



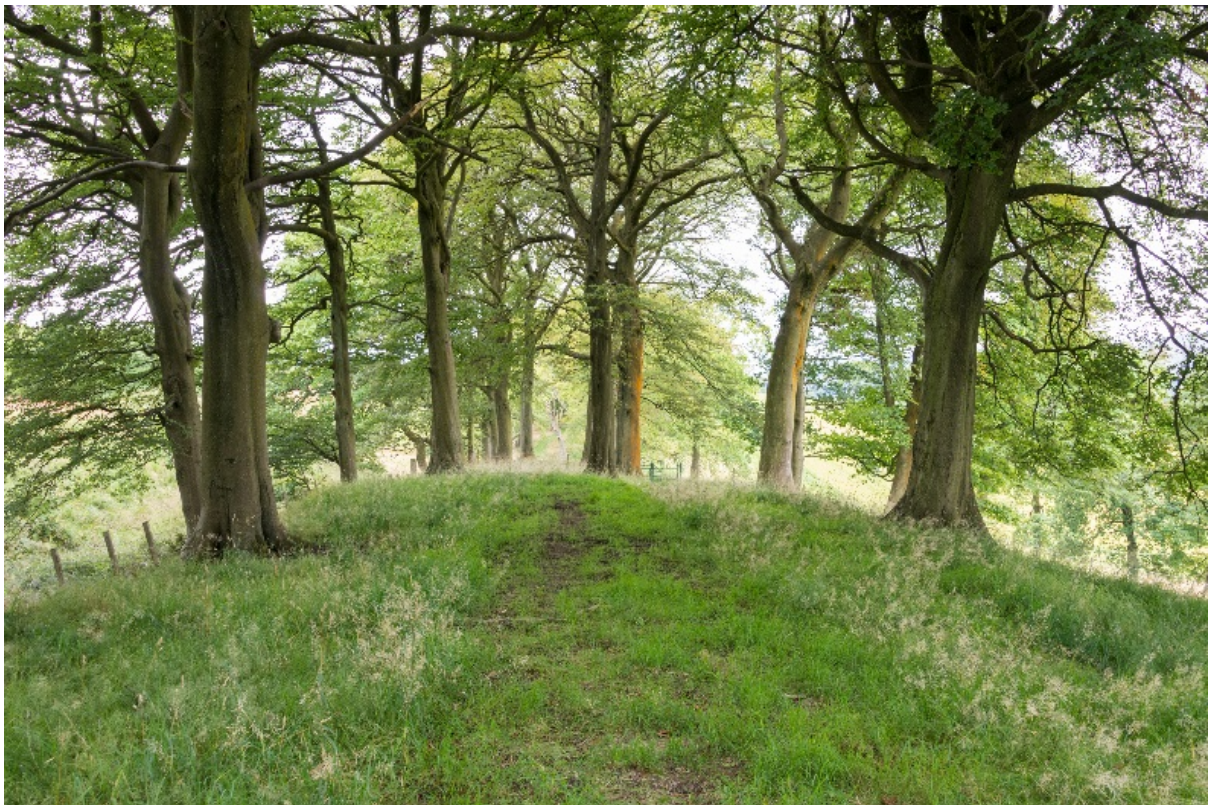
HISTORIC
ENVIRONMENT
SCOTLAND

ÀRAINNEACHD
EACHDRAIDHEIL
ALBA

Property in Care (PIC) ID:	PIC173
Designations:	Scheduled Monument (SM90012)
Taken into State care:	1962 (Guardianship)
Last Reviewed:	2020

STATEMENT OF SIGNIFICANCE

ANTONINE WALL - GARNHALL FARM



We continually revise our Statements of Significance, so they may vary in length, format and level of detail. While every effort is made to keep them up to date, they should not be considered a definitive or final assessment of our properties.



© Historic Environment Scotland 2020

You may re-use this information (excluding logos and images) free of charge in any format or medium, under the terms of the Open Government Licence v3.0 except where otherwise stated.

To view this licence, visit <http://nationalarchives.gov.uk/doc/open-government-licence/version/3> or write to the Information Policy Team, The National Archives, Kew, London TW9 4DU, or email: psi@nationalarchives.gov.uk

Where we have identified any third party copyright information you will need to obtain permission from the copyright holders concerned.

Any enquiries regarding this document should be sent to us at:

Historic Environment Scotland
Longmore House
Salisbury Place
Edinburgh
EH9 1SH

+44 (0) 131 668 8600

www.historicenvironment.scot

You can download this publication from our website at

www.historicenvironment.scot

HISTORIC ENVIRONMENT SCOTLAND STATEMENT OF SIGNIFICANCE

ANTONINE WALL – GARNHALL FARM

CONTENTS

PART A	FRONTIERS OF THE ROMAN EMPIRE WORLD HERITAGE SITE	2
PART B	STATEMENT OF SIGNIFICANCE	6
1	SUMMARY	6
1.1	Introduction	6
1.2	Statement of significance	7
2	ASSESSMENT OF VALUES	9
2.1	Background	9
2.2	Evidential values	11
2.3	Historical values	12
2.4	Architectural and artistic values	13
2.5	Landscape and aesthetic values	14
2.6	Natural heritage values	14
2.7	Contemporary/use values	14
3	MAJOR GAPS IN UNDERSTANDING	15
4	ASSOCIATED PROPERTIES	15
5	KEYWORDS	16
	BIBLIOGRAPHY	16
	APPENDICES	
	Appendix 1: Timeline	18
	Appendix 2: Summary of archaeological investigations	19
	Appendix 3: Outstanding Universal Value	20
	Appendix 4: Overview and introduction to the Antonine Wall	22

PART A: FRONTIERS OF THE ROMAN EMPIRE WORLD HERITAGE SITE

Introduction

In 2008 the Antonine Wall was inscribed by UNESCO to become part of the Frontiers of the Roman Empire World Heritage Site (FREWHS). This already included Hadrian's Wall (inscribed in 1987) and the German *Limes* (inscribed in 2005). To be inscribed on the world heritage list, a site must meet at least one of the criteria for the assessment of Outstanding Universal Value (OUV) as defined by UNESCO¹. A fuller exposition of the OUV of the site is given in Appendix 3 below or can be found on the UNESCO website.

This brief introduction sets the Antonine Wall in the context of the FREWHS and outlines the justification for inscription of the Antonine Wall on the World Heritage List.

The Historic Environment Scotland (HES) Statement of Significance for Garnhall which follows at Part B, recognises this individual site as an integral part of the wider Antonine Wall World Heritage Site. The Assessment however focusses in on Garnhall itself for a closer examination of its individual history, development and range of heritage values.

It is also acknowledged that HES directly manages only a small proportion of the whole Antonine Wall WHS. This assessment is intended to inform understanding and management of those sites (or 'Properties in Care') for which HES has direct management responsibility:

Bantaskin (PIC167); Bar Hill (PIC168); Bearsden Bath-house (PIC169); Castlecary Fort (PIC170); Croy Hill (PIC171); Dullatur (PIC172); Garnhall Farm (PIC173); Kinneil House (PIC152); Kirkintilloch (PIC174); Rough Castle (PIC175); Seabegs Wood (PIC176); Tollpark (PIC177); Watling Lodge (PIC178) and Watling Lodge West (PIC179).

The Frontiers of the Roman Empire WHS (FREWHS)

The Antonine Wall is one of only three artificial frontiers constructed by the Roman army in Europe. Collectively, they form a serial trans-national World Heritage Site, the FREWHS; the OUV of which lies in the survival of the 2nd-century Roman frontier system across Europe, North Africa and the Middle East. This reflects the development and breadth of Roman military architecture and power. Together, the inscribed remains form an extensive relict cultural landscape which displays the unifying character of the Roman Empire, through its common culture, but also its distinctive responses to local geography and political and economic conditions. Each component part is a substantial reflection of the way resources were deployed in a particular part of the Empire.

¹ For more information on Criteria and the Inscription process, see <https://en.unesco.org/>

The Antonine Wall within the FREWHS

For a short period in the mid second century the Antonine Wall formed the north-western frontier of the Roman Empire. The Antonine Wall was built under the Emperor Antoninus Pius in the 140s AD as an attempt to conquer parts of northern Britain, and extends for some 60km across central Scotland from the River Forth to the River Clyde. Through its military and civil constructions, it demonstrates cultural interchange through the extension of Roman technical skills, organisation and knowledge to the furthest reaches of the Empire. It embodies a high degree of expertise in the technical mastery of stone and turf defensive constructions. As it was in use for only a single generation, it provides a dated horizon at a particular point in time and offers a specific insight into how the frontier was designed and built. Together, the remains of the frontiers, consisting of vestiges of walls, ditches, earthworks, fortlets, forts, fortresses, watchtowers, roads and civilian settlements, form a social and historical unit that illustrates an ambitious and coherent system of defensive constructions perfected by engineers over the course of several generations.²

The Antonine Wall, as a Roman frontier, is a physical and visual testimony to the former extent of one of the world's greatest states, the Roman Empire. It formed part of a frontier system which surrounded and protected that Empire.

The Antonine Wall has a particular value in being the most highly developed frontier of the Roman Empire: it stands at the end of a long period of development over the previous hundred years and therefore facilitates a better understanding of the development of Roman frontiers in Britain and beyond. It is one of only three artificial barriers along the 5000km European, North African and Middle Eastern frontiers of the Roman Empire. These systems are unique to Britain and Germany, though more fragmentary linear barriers are known in Algeria and Romania. Built following an invasion of what is now Scotland during AD 139/142 and occupied for possibly only 20 years, it served as the most northerly frontier of the Roman Empire at the high point of its power and influence in the ancient world. It has many unique features which demonstrate the versatility of the Roman army, while its short life is of considerable value in offering a snap-shot of a Roman frontier in its most advanced state. As the most northerly frontier, it stands as an example of Rome's stated intention to rule the world.

The Antonine Wall has a distinctive value as a unique physical testimony to the nature of the constitution of the Roman Empire and the requirement of the emperor for military prestige. The abandonment of Hadrian's Wall and the construction of a new northern frontier at the behest of a new emperor reflects the realities of power politics in Rome during Edward Gibbon's "Golden Age". It also stands as a physical manifestation of the statements of writers flourishing during the reign of Antoninus Pius about the measures which Rome took to protect its inhabitants, even those living in its most distant province.

² <https://whc.unesco.org/en/list/430>

The Antonine Wall is of significant value in terms of its rarity, scale, preservation, and historical and archaeological value; the engineering and planning skills of its builders; the understanding of Roman frontier policy and management, and its influence on the landscape and history of local peoples during the Roman period and beyond; and also in terms of its contribution to the economic, educational and social values of today's society.³

- The Antonine Wall sits within the broad framework of Roman frontiers, but it also contains many unique or unusual elements. These mainly relate to the structure itself:
- The Antonine Wall was built within 20 years of Hadrian's Wall, and, in its general framework, bears some features in common, but in many aspects it is clearly a development of Hadrian's Wall and is different in many ways, reflecting a more complicated frontier complex;
- The Antonine Wall is the only frontier to have had a turf rampart erected on a stone base. Hadrian's Wall was of stone in the eastern part and turf in the west, but the turf wall was built directly on the ground - though short stretches of cobble foundations have been found at two locations - and was wider than the Antonine Wall. The Outer *Limes* in Germany was a timber palisade in its primary phase. The purpose of the stone base may have been to add stability to the superstructure, or to aid drainage through the barrier;
- The forts are more densely spaced on the Antonine Wall than on any other frontier of the Roman empire;
- Unlike on Hadrian's Wall the forts are diverse in their sizes, defences and internal arrangements;
- Unusually, many forts have annexes attached to them. Annexes have been recorded at many forts but not at those on linear barriers, but no such structures were constructed on Hadrian's Wall and they do not exist in the same form on the German *Limes*;
- Six expansions, probably used for signalling, are known: these structures are unique to the Antonine Wall;
- The three small enclosures discovered in one section of the Antonine Wall are unique on Roman frontiers;
- The short life of the Antonine Wall, coupled with the location and morphology of the known camps, enables most to be definitively identified as temporary camps used by the soldiers building the frontier. As a result, it is possible to offer suggestions on the organisation of labour, which is not possible on other frontiers. Many temporary camps are known along the line of Hadrian's Wall (few are recorded in Germany), but the long history of that frontier renders it difficult to disentangle temporary camps from marching camps and practice camps;
- The Antonine Wall was the shortest occupied linear frontier in the Roman Empire and is thus a unique archaeological resource.

³ Historic Scotland 2007: 75

The temporary camps discovered on the Antonine Wall are particularly important in relation to the final unique element, the twenty Distance Slabs which are known either whole or in part from the Antonine Wall. These record the lengths of Wall built by each of the three legions of Britain, the Second, Sixth and Twentieth.

However, the distance slabs are not simple records, but highly decorated and sculptured stones which depict events during the military campaigning and form one of the most important collections of roman military sculpture from any frontier of the roman empire. Together with the evidence of the temporary camps, they allow important conclusions to be reached about the construction of the Antonine Wall which are unique to this frontier. They are also an important element in any consideration of the reason for the construction of the Antonine Wall, which is generally believed to relate to the personal position of the new Emperor Antoninus Pius. On one interpretation, they glorify the success of Roman arms on behalf of the Emperor, whose name appears on all the inscriptions, over the enemies of Rome and emphasise the support of the gods, and in particular the goddess victory, for the romans and their emperor. However, as the known distance slabs have been removed from the monument and placed in museums or their protection, they are not included in the world heritage site.⁴

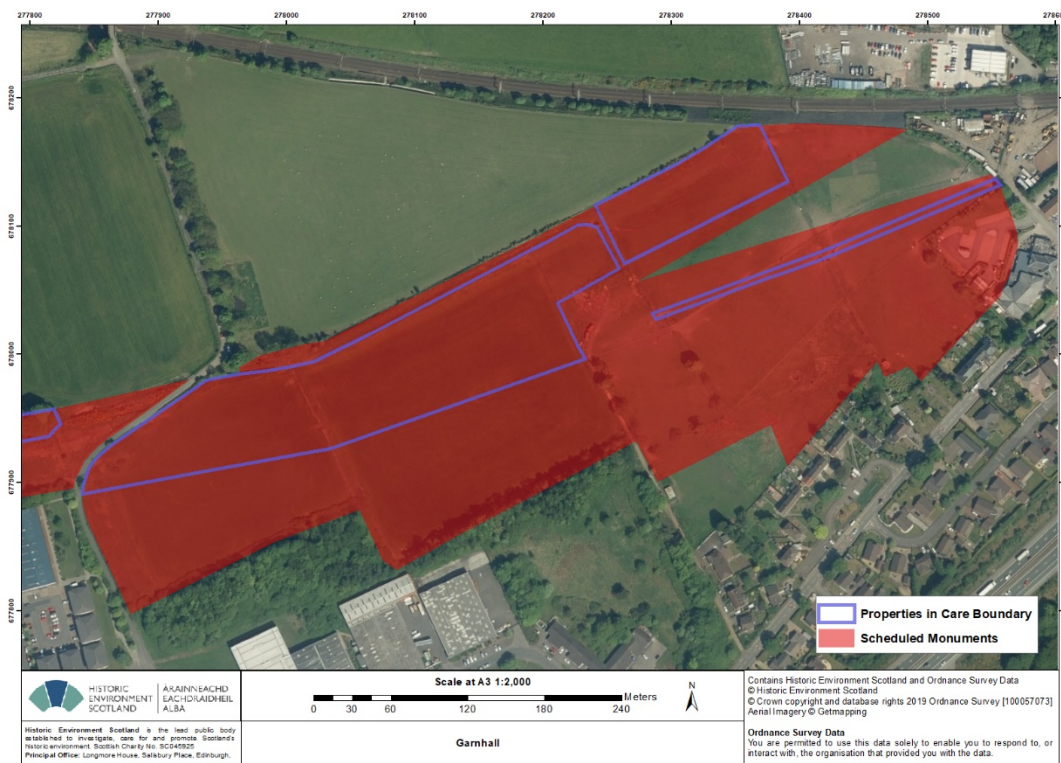
⁴ Historic Scotland 2007: 76-77

PART B: STATEMENT OF SIGNIFICANCE: GARNHALL

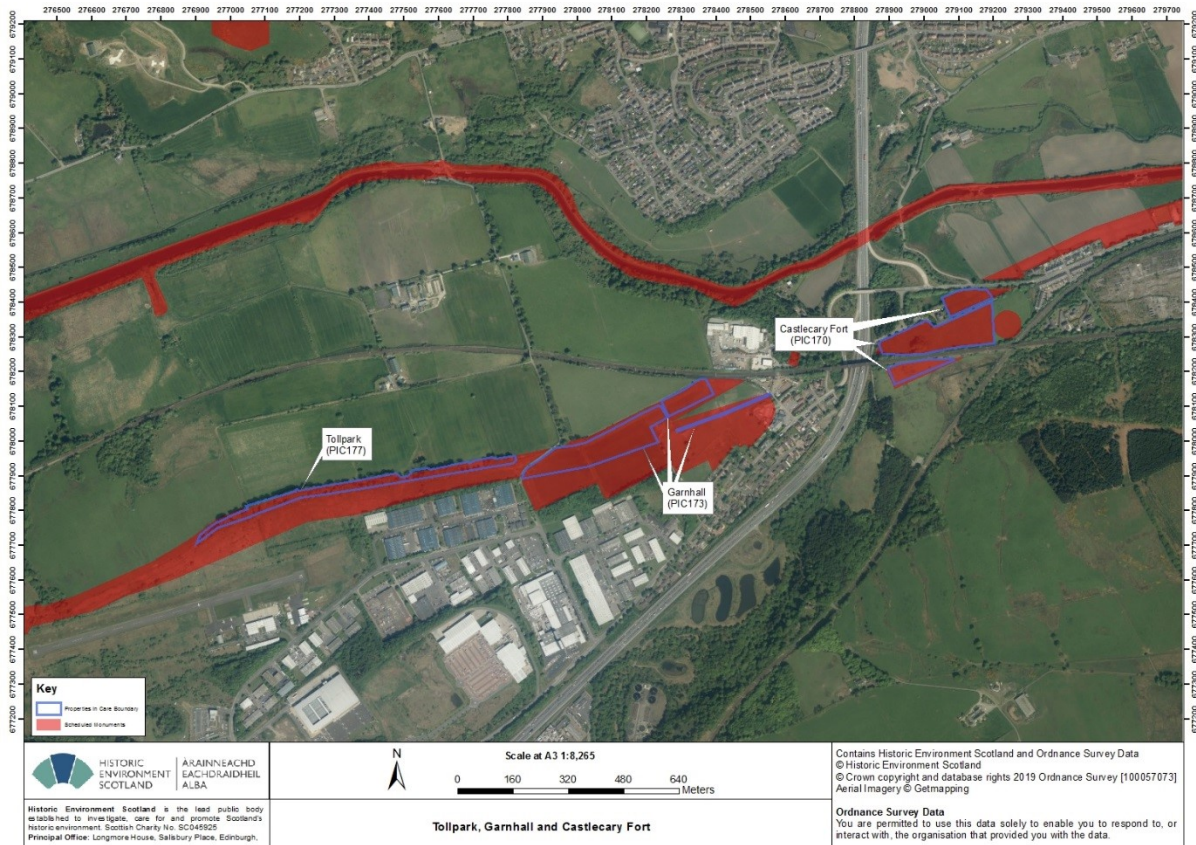
I. SUMMARY

1.1 Introduction

This property is part of the Antonine Wall and comprises a 570m long stretch of highly visible Ditch and Outer Mound, portions of two Roman temporary camps near the line of the Antonine Wall Rampart, and subsurface remains of the Berm, Rampart, and Military Way. It lies just east of another important section of Roman frontier at Tollpark (PIC177), separated only by the imposition of Wyndford Road, and is within view of the Antonine Wall fort of Castlecary (PIC170), which lies across the M80 to the east. An Iron Age ring-ditch enclosure is located near the western end of the property, and it has been proposed that it was re-used in the Roman period as the site of a possible Antonine Wall watch-tower, although this interpretation is not universally accepted. This property begins, heading toward the west, a 9km long section of highly visible Antonine Wall that could be considered the “central sector” of the former Roman frontier.



Garnhall: Scheduled Area and Property in Care boundary.
For illustrative purposes only.



Proximity of Garnhall to Castlecary Fort and Tollpark, with Forth and Clyde Canal to the north.

1.2 Statement of Significance

As a part of the Antonine Wall, this property inherits the following aspects of significance:

- It is part of a well-preserved Roman frontier.
- Of all of imperial Rome's linear frontiers, this is the final and most developed example, in terms of strategic defense. Its engineers improved on Hadrian's Wall (built a generation before), to incorporate new features into its design, such as the use of fortified annexes which are unique in Roman linear frontier systems. It allows the development of Roman frontiers to be investigated through comparison with Hadrian's Wall and the German *Limes* thereby allowing us to understand more clearly the arrangements the Romans made to protect their Empire, as well as the relationship between broad principles and distinct local requirements. The Wall has further importance as a dating tool. Artefacts, pottery and ecofacts found in the structures along the frontier had a limited period of use, and are invaluable for helping date other forts and civil settlements.
- At the time of its creation, it represented the biggest ever engineering project to be undertaken within central Scotland, and a major human-engineered topographical transformation of the landscape.

- The Antonine Wall is the only frontier to have had a turf rampart erected on a stone base; this may have been to add stability to the superstructure, or to aid drainage through the barrier.
- Following the Roman military abandonment of the frontier, it remained a highly visible landscape feature with continued significance in subsequent periods. It retained significance in a number of ways, e.g. as a defensive line, with its stones and Distance Slabs reused in the construction of neighbouring dykes and properties, and in the name “Graham’s Dyke,” by which it came to be known; a name still reflected within modern street names in the eastern half of the Wall’s line.
- Within the FREWHS, the Distance Slabs are unique to Scotland. Three legions built the Wall, and erected these 19 sculpted and inscribed sandstone blocks to record the completion of their individual stretches.
- The Antonine Wall is a most important repository of environmental evidence, both through its materials of construction and because it provides a dated horizon stretching right across Scotland. Through environmental evidence from the Antonine Wall, it has been possible to reconstruct the vegetational history of Central Scotland. The wall gains further international significance through the context in which it is managed as a World Heritage Site. The archaeological remains, the line and the setting of the Antonine Wall and its buffer zone are protected by UK Acts of Parliament, supplemented by National Planning Policy Guidelines, which together form a coherent framework for the protection of the whole of the World Heritage Site and its buffer zone.

More particularly, Garnhall is significant for the following reasons:

- It features a well-preserved section of Ditch with occasional portions of visible Outer Mound.
- It begins a 9km section where the Roman frontier is highly visible.
- It uniquely features a temporary camp abutting, and post-dating, the Antonine Wall Rampart.
- It provides strong evidence for defensive pits on the Antonine Wall Berm.
- The Military Way runs across previous Iron Age structures.
- A possible watch-tower, otherwise unknown on the Antonine Wall, has been suggested here, re-using an earlier Iron Age structure, although this is disputed.
- The increased distance between the Ditch and Military Way may suggest the possible presence of a fortlet.

2. ASSESSMENT OF VALUES

2.1 Background

The Antonine Wall is the remains of the Roman Empire's northwest frontier built in the mid-second century. It was around 41 miles (66km) long and stretched across central Scotland from the Firth of Forth near Bo'ness to Old Kilpatrick on the Clyde. The Wall was constructed, in functional operation, and then abandoned all within a period of about twenty years between the early AD 140s-160s. A full overview and description of the Antonine Wall is given at Appendix 4⁵.

Though termed a "Wall", the main structure was of Rampart and Ditch. The Rampart was constructed mostly out of layers of turf, erected on a stone base, and reached a height of 3m. To the north of the Wall, the defences also included a huge Ditch, nearly 5m deep in places, and an Outer Mound constructed from the earth thrown out of the ditch. Seventeen forts plus additional 'fortlets' accommodated the men stationed along the Wall during its brief occupation (the number could be as low as 4,500-5,000 men)⁶.

The Military Way, a service road built to the south of the Wall, was another important element, enabling troops to move swiftly along its course, bearing supplies, commands and news. The Wall was entirely built by members of the three Roman legions stationed in Scotland. During construction, the soldiers lived in leather tents or wooden huts situated inside temporary camps which were enclosed by light defences. These temporary camps were an integral part of the design of the Antonine Wall, and were carefully positioned along the frontier during its creation, to ensure maximum efficiency.

In the late 150s / early 160s AD the Antonine Wall was abandoned and the guard withdrawn. The rampart was not demolished, nor was the ditch filled in, but fort buildings were burnt or dismantled. The Romans took valuable and portable items away with them, but heavy or worthless objects were discarded, in some cases down the well of the fort - to the great benefit of future archaeologists.

Throughout the post-Roman and medieval periods the Antonine Wall and its immediate vicinity saw continued occupation and the construction of new settlements and structures, including churches, villages, and several castles, including mottes. The wall became known as 'Grymysdyke' and its Roman heritage was forgotten. Throughout the post-Roman and medieval

⁵ Note: The key linear features include the Rampart, Ditch, Berm, Outer Mound, and Military Way; these features are all presented in this document with an initial capital letter in order to avoid confusion between the main frontier's Rampart and Ditch and those ramparts and ditches that surround the Wall's installations.

⁶ Keppie 2009

periods the Antonine Wall and its immediate vicinity saw continued occupation and the construction of new settlements and structures, including churches, villages, and several mottes and castles.

From the 18th century there was growing interest in and exploration of the Wall by antiquarians, and certain sites became celebrated. Industrialisation and development in the central belt also saw destruction of some parts of the wall by agricultural and industrial development, and the building of roads and canals.

HES manages fourteen sites along the Wall but the majority of the Wall is not in State care. Garnhall Farm was taken into State care in 1962 and first Scheduled in 1972. In 2008 the Antonine Wall was inscribed as a World Heritage Site and a management plan for the WHS is available at www.antoninewall.org/world-heritage/managing-antonine-wall

Following inscription in 2008, a Management Plan Steering Group was established to develop and deliver Management Plans and key strategic work along the Antonine Wall. This comprises Historic Environment Scotland (HES) and the five local authorities along its length (West Dunbartonshire Council, Glasgow City Council, East Dunbartonshire Council, North Lanarkshire Council and Falkirk Council). A World Heritage Site Co-ordinator is employed by HES to work on behalf of this partnership and deliver the UNESCO WHS requirements. The Partnership invests in capital and revenue projects to protect and promote the Antonine Wall; since inscription this has included (amongst other projects) key branding work, a new website, a digital app platform, new road and onsite signage, economic and visitor studies, investment in visitor counters and a significant Heritage Lottery Fund (HLF) project focused on regeneration and community engagement. Four new staff members were recruited for a three-year period to manage the HLF project and key to their work was a co-design and co-curation approach with local communities. Key groups being targeted include communities in the most deprived areas of the Central Belt, asylum seekers (including those from areas associated with the original Roman troops stationed on the Antonine Wall), young people both in and out of schools, and individuals seeking skills development opportunities.

The Antonine Wall has benefited from the development of the John Muir Way, a coast to coast walking route that crosses several parts of the Antonine Wall. This has helped to find alternative routes for cyclists and horse-riders, where some parts of the site had been vulnerable to damage from such use.

Internationally, as part of the Frontiers of the Roman Empire World Heritage Site, staff and communities connected to the Antonine Wall liaise and network with counterparts along Hadrian's Wall and the German

Limes. This has included: joint European funding bids; networking trips; hosting / attending international meetings and delegations; and conferences and seminars. There has also been successful engagement with wider European Roman frontier networks.

2.2 Evidential values

This property provides evidence for the line and construction of the Antonine Wall, particularly through the clearly visible presence of the Ditch and Outer Mound, but also through the buried evidence of the Rampart, Military Way, and defensive pits on the Berm. The berm obstacles (Woolliscroft 2008: 142-145; 162-163), sometimes called *cippi* or *lilia*, connect this site to similar features at other locations from both the Antonine and Hadrian's Wall⁷, and suggest that it may have been a regular feature along the frontier.

Two temporary camps are known from this property, one ("Garnhall 1") located at the eastern end of the property and extending beyond the property to the east, and the other ("Garnhall 2") located toward the western end of the property and possibly extending beyond the Property in Care (PIC) boundary to the north⁸. The Garnhall 1 camp, encompassing about 4.5ha, now lies partially under the Castlecary Hotel and other local structures. Sections were excavated between 1989 and 1996 and the camp was found to measure 290m x 160m, with evidence of rampart collapse and repair, suggesting an extended period of use⁹. Garnhall 1 has been interpreted as early in the series of camps along the Wall, possibly involved in the early phase of its design and construction¹⁰. The Garnhall 2 camp, encompassing at least 4ha, encloses the summit of the hill; its full dimensions have not yet been identified, as its eastern extent has not been discovered. It measures at least 300m x 133m, and while it was initially believed that this camp pre-dated the Antonine Wall, excavations have revealed that it abuts and post-dates the line of the Rampart¹¹; this may imply that the camp was used for repairs or later construction work.

Located within the area of the Garnhall 2 camp is a circular enclosure of possible Iron Age origins that appears to have been dug before the construction of the Antonine Wall. Inside this enclosure was a metalled surface and post-holes interpreted as for a square timber tower, which may

⁷ Bailey 1995; Bidwell 2005; Dunwell *et al* 2002: 260-67

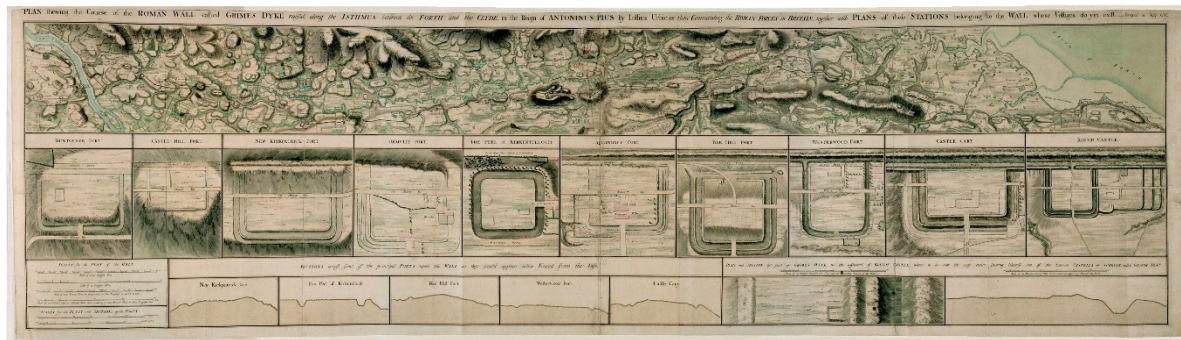
⁸ Jones 2011: 210-211

⁹ Keppie *et al* 1995: 631-643

¹⁰ Jones 2005

¹¹ Woolliscroft 2008: 167-168

have been a Roman period watch-tower. A track way was identified, connecting this feature to the Military Way¹².



SC 934405 © Courtesy of HES. The course of the entire Antonine Wall along with plans and sections of the main forts and fortlets along the Wall. Surveyed in 1755. Titled 'Plan showing the course of the Roman wall called grime's Dyke...together with plans of those stations belonging to the wall'.

2.3 Historical values

This property helps to tell the story of the line and construction of the Roman frontier in Scotland through its evidentiary base of visible and subsurface remains of key linear features and temporary camps. The defensive pits on the Berm, also evidenced elsewhere along the line of the Antonine Wall and on Hadrian's Wall¹³, may help to support arguments that the Roman frontiers in Britain served a defensive function rather than purely one of controlling the movement of people and goods across the frontier.

Evidence for pre-Roman activities are particularly important, adding significant time depth to the property, and potentially shedding light on how the imposition of the Roman frontier impacted upon local non-Roman communities. The recovery of radiocarbon dates of between 210 BC to AD 60 from a hearth in a ring-ditched feature suggest a pre-Roman Iron Age occupation¹⁴, but more investigation will be required to determine the chronology, nature, and extent of the property's pre-Roman presence. Post-holes within the ring-ditch may indicate a possible square watch-tower that may have been constructed in the Roman period. Whether this is a Flavian or Antonine date remains uncertain, and the watch-tower interpretation remains in dispute; if there is a Roman period watch-tower here, it would currently be unique along the entire line of the Antonine Wall.

¹² Woolliscroft 2008: 145-158; 163-167

¹³ Bailey 1995; Bidwell 2005; Dunwell *et al* 2002: 260-67

¹⁴ Woolliscroft 2008: 168

The property also tells the story of aerial photography and its contribution to modern archaeology. The two camps at Garnhall were discovered in the 1950s and 1960s¹⁵, a period in which the number of known archaeological sites across Britain greatly expanded. It also cautions us about the strength of interpretive conclusions that can be reached from aerial photography and other remote sensing techniques, as the initial interpretations about Garnhall 2 camp were overthrown following subsequent excavations.

Around 1977, plans were advanced for buildings on Garnhall Farm to be converted into an Antonine Wall interpretation centre¹⁶. This initiated excavations on the property, but the plans to develop an interpretive centre were never completed, and the farm buildings were demolished.

2.4 Architectural and artistic values

The most visible architectural feature on this property is the Antonine Wall Ditch, measuring a very wide 20m and up to 2m deep. The Outer Mound is sometimes visible, measuring up to 2m high in the western part of the property, but this is masked by a trackway and hedgerows. Where the Military Way is known, there are surface indications of its location as a 6m wide terrace. Although defensive pits (*cippi*, also known as '*lilia*' at Rough Castle) are known to exist on the Berm, these are not visible on the surface.

There are two temporary camps partially present on this property, but neither is currently visible on the ground. Garnhall 1 is at the eastern end of the property and its northern defences lie very close to the Antonine Wall's Rampart. The Garnhall 2 camp was initially thought to underly the Antonine Wall and, therefore, pre-date the construction of the frontier, but more recent excavation now suggests that it abuts and post-dates the frontier's Rampart. This is very unique, as there is no other known temporary camp along the line of the Wall that has such a close relationship and is known to be later than the Wall itself.

The potential watch-tower is located within the defences of the Garnhall 2 camp, re-using a possible Iron Age ring-ditch enclosure. The excavator highlighted similarities with the Iron Age ring-ditches at West Plean and East Coldoch, both located north of this property, and with a variety of Roman watch-towers across northern Britain, particularly those along the Gask Ridge, which belong to the Flavian period¹⁷. If there was a watch-tower here, it would be currently unique along the Antonine Wall, but would fit with similar features known on both Hadrian's Wall and the German *Limes*.

¹⁵ St Joseph 1955: 86; St Joseph 1965: 80

¹⁶ Robertson 2015: 79

¹⁷ Woolliscroft 2008: 163-167

2.5 Landscape and aesthetic values

This property lies in a stretch of woodland and open fields with good views to the north. Views to the south are interrupted by residential and industrial developments.

2.6 Natural heritage values

Several protected species have been recorded; Redwing and Fieldfare have been noted on site, with Kestrel, Sky Lark, Starling, Song Thrush and Green Woodpecker also present. One of the most important aspects of Garnhall, along with other sections of the Antonine Wall, is their capacity to act as wildlife and biodiversity corridors for the surrounding areas. Linear features of relatively undisturbed countryside are of great importance.

Geology

The Antonine Wall was created making best advantage of the local geology. Here the bedrock belongs to the Passage Formation of the Clackmannan Group, including coarse sandstones and seatearths, with superficial deposits of Devensian Till¹⁸.

2.7 Contemporary/use values

The Antonine Wall is well used by communities along its length as a relatively rare green space amid the urbanisation of Central Scotland. Walkers, trail runners, healthy living groups, and youth groups have all been identified as key 'greenspace' users during consultation events. Since its World Heritage Inscription in 2008, growing awareness of its status has emerged, and a more diverse audience developed. 'World Heritage' tourism has been noted by local tourism providers and a growing schools audience has been observed through social media. Further information on the WHS Management Plan Group and partnership activities and projects is given above at section 2.1 Background.

Wider opportunities for community development, regeneration, and local / national / international networking remain significant.

Walkers use this property, which begins a 9km long uninterrupted stretch of visible Antonine Wall toward the west.

¹⁸ British Geological Survey, 2019. Onshore GeoIndex. Available from: www.bgs.ac.uk/geoindex/ [6 February 2019]

Visitor numbers to the HES managed Antonine Wall sites have been difficult to quantify as the sites are freely accessible and not staffed. Many attract substantial numbers of walkers as well as those setting out to visit the Roman site. Automatic counters have been installed at some sites which gives an idea of footfall. At Rough Castle, which is very near the Falkirk Wheel, over 100,000 were counted, while at Bar Hill 34,000 were counted over the course of a year (2018).

3. MAJOR GAPS IN UNDERSTANDING

The Antonine Wall Research Agenda (in draft, 2019) highlights a number of areas where further work on the Wall line could enhance understanding. These include:

- Work on the local landscape and environment before the Wall's construction.
- Geoarchaeological work on the rampart and ditch.
- Study of the building materials and techniques deployed on the Wall.
- Remote sensing in the vicinity to detect additional structures including the Military Way.

For further information on the Research Agenda see:

www.antoninewall.org

The primary gaps in our understanding of Garnhall are:

- The chronology and function of Garnhall 2 temporary camp remains uncertain.
- The precise dates and function of the circular structure remains uncertain.
- The chronology, nature, and extent of the Iron Age settlement requires more investigation.
- Research is needed to establish a better understanding of visitor number and visitor profile across Antonine Wall sites. This would help in realising the potential of sites, especially those with high-footfall, to engage with a wide variety of community and interest groups who may represent new audiences for HES.

4. ASSOCIATED PROPERTIES

In addition to this property, there are currently 13 further stretches of the Antonine Wall in the care of Historic Environment Scotland:

Bantaskin (PIC167); Bar Hill (PIC168); Bearsden Bath-house (PIC169); Castlecary Fort (PIC170); Croy Hill (PIC171); Dullatur (PIC172); Kirkintilloch

(PIC174); Kinneil House (PIC152); Rough Castle (PIC175); Seabegs Wood (PIC176); Tollpark (PIC177); Watling Lodge (PIC178) and Watling Lodge West (PIC179).

5. KEYWORDS

Garnhall; Roman frontier; *limes*; Antonine Wall; Hadrian's Wall; World Heritage Site; Iron Age; watch-tower; pits

BIBLIOGRAPHY

Bailey, G.B. (1995) The Antonine Frontier in Callander Park, Falkirk: Its Form and Structural Sequence. *Proceedings of the Society of Antiquaries of Scotland*, 125: 577-600.

Bidwell, P.T. (2005) The Systems of Obstacles on Hadrian's Wall: Their Extent, Date and Purpose. *Arbeia Journal*, 8: 53-75.

Dunwell, A., Bailey, G., Leslie, A. and Smith, A. (2002) Some Excavations on the Line of the Antonine Wall, 1994-2001. *Proceedings of the Society of Antiquaries of Scotland*, 132: 259-304.

Hannon, N. (forthcoming) The Hidden Landscape of the Roman Frontier: Aerial Laser Scanning, Spatial Analysis and the Antonine Wall. (PhD thesis, Canterbury Christ Church University)

Historic Scotland (2007) Frontiers of the Roman Empire World Heritage Site Proposed Extension: The Antonine Wall, Nomination for Extension of the World Heritage Site, Vol. 1. Edinburgh, Historic Scotland.

Jones, R.H. (2011) *Roman Camps in Scotland*. Edinburgh: Society of Antiquaries of Scotland.

Keppie, L.J.F. (2009) 'The Garrison of the Antonine Wall: endangered species or disappearing asset' in A. Morillo, N. Hanel and E. Martin (eds) *Limes XX. Estudios Sobre la Frontera Romana*, Madrid, 1135-45.

Keppie, L.J.F., Bailey, G.B., Dunwell, A.J., McBrien, J.H., Speller, K. (1995) Some excavations on the line of the Antonine Wall, 1985-93. *Proceedings of the Society of Antiquaries of Scotland*, 125: 601-671.

Historic Environment Scotland - Scottish Charity No. SC045925
Principal Office: Longmore House, Salisbury Place, Edinburgh EH9 1SH

Maldonado, A. 2015 'The Early Medieval Antonine Wall', *Britannia*, Vol 46, pp 225-245)

Jones, R H 2005 'Temporary Camps on the Antonine Wall' in Visy, Z (ed.) *Limes XIX*. Proceedings of the XIXth International Congress of Roman Frontier Studies held in Pecs, Hungary, September 2003. 551-50. Pecs, Hungary

St Joseph, J.K. (1955) Air Reconnaissance in Britain, 1951-5. *Journal of Roman Studies*, 45: 82-91.

St Joseph, J.K. (1965) Air Reconnaissance in Britain, 1961-64. *Journal of Roman Studies*, 55: 74-89.

Woolliscroft, D.J. (2008) Excavations at Garnhall on the line of the Antonine Wall. *Proceedings of the Society of Antiquaries of Scotland*, 138: 129-176.

Other Resources

3D digital models of various artefacts found at Antonine Wall sites, can be freely viewed on Historic Environment Scotland's Sketchfab page¹⁹. An interactive Antonine Wall mobile app can also be downloaded to aid site visits and interpretation²⁰, and the full scheduling description is available at: <http://portal.historicenvironment.scot/designation/SM90012>

¹⁹ <https://sketchfab.com/HistoricEnvironmentScotland/collections/antonine-wall>

²⁰ Available at: www.antoninewall.org/visiting-the-wall/download-the-app

APPENDICES

APPENDIX I: TIMELINE

Iron Age	A ring-ditch with internal hearth are constructed at the western end of the property.
c. AD 142	Construction of the Antonine Wall is initiated by the Roman Emperor Antoninus Pius (AD 138-161), after a successful campaign in AD 140s by Lollius Urbicus, Governor of Britain. At some point after the Wall's initial construction, Garnhall 2 camp is constructed, abutting the south face of the Antonine Wall's Rampart.
c. AD late 150s / early 160s	The Antonine Wall system is abandoned by the Roman military, and the northern frontier returns to the line of Hadrian's Wall.
1962	The property is taken into State care (Guardianship).
1972	The site is first Scheduled.
1977	Plans were developed to build an Antonine Wall interpretation centre at this property, initiating archaeological excavation; these plans were never completed, but the farm buildings were demolished.
2003	The Scottish Executive announces that the Antonine Wall (including this property) would be nominated as a UNESCO World Heritage Site.
2008	The Antonine Wall is inscribed as part of the "Frontiers of the Roman Empire" UNESCO World Heritage Site, joining Hadrian's Wall and the Upper German-Raetian <i>Limes</i> .

APPENDIX 2: SUMMARY OF ARCHAEOLOGICAL INVESTIGATIONS

- 1934 The line of Wall and Military Way surveyed by Sir George Macdonald.
- 1952 Garnhall 1 temporary camp is recorded from the air by J.K. St Joseph from aerial photography.
- 1957 The Line of Wall and Military Way surveyed by Ordnance Survey.
- 1965 Garnhall 2 Temporary Camp recorded by J.K. St Joseph from aerial survey.
- 1977 Excavations around the site of old Garnhall Farm house, now demolished, revealed the Rampart base, defined the edges of the Ditch, and located a possible trace of the Military Way.
- 1980 The Line of Wall and Military Way surveyed by Ordnance Survey.
- 1989–1993 Several excavations of Garnhall 1 camp by Lawrence Keppie and K. Speller.
- 1994–1996 Excavations across the property, by David Woolliscroft, including Garnhall 2 camp and the Iron Age ring-ditch and what was interpreted as a possible watch-tower enclosed within it. These excavations also revealed defensive pits (*cippi*) on the Antonine Wall’s Berm.
- 2010 Aerial LiDAR captured at 0.5-m resolution covering the World Heritage Site, as part of the “Hidden Landscape of a Roman Frontier” collaborative research project run and jointly funded by Canterbury Christ Church University (CCCU) and Historic Environment Scotland (HES).

APPENDIX 3: OUTSTANDING UNIVERSAL VALUE

The Justification for Inscription of the Antonine Wall World Heritage Site against OUV criteria²¹.

Criterion (ii): *exhibit an important interchange of human values, over a span of time or within a cultural area of the world, on developments in architecture or technology, monumental arts, town-planning or landscape design.*

The extant remains of the fortified German *Limes*, Hadrian's Wall and Antonine Wall constitute significant elements of the Roman Frontiers present in Europe. With their forts, fortlets, walls, ditches, linked infrastructure and civilian architecture they exhibit an important interchange of human and cultural values at the apogee of the Roman Empire, through the development of Roman military architecture, extending the technical knowledge of construction and management to the very edges of the Empire. They reflect the imposition of a complex frontier system on the existing societies of the north-western part of the Roman Empire, introducing for the first time military installations and related civilian settlements, linked through an extensive supporting network. The frontiers did not constitute an impregnable barrier, but controlled and allowed the movement of peoples: not only the military units, but also civilians and merchants. Hence, they triggered the exchange of cultural values through movement of soldiers and civilians from different nations. This entailed profound changes and developments in the respective regions in terms of settlement patterns, architecture and landscape design and spatial organization. The frontiers still today form a conspicuous part of the landscape.

Criterion (iii): *bear a unique or at least exceptional testimony to a cultural tradition or to a civilization which is living or which has disappeared.*

As parts of the Roman Empire's general system of defence the German *Limes*, Hadrian's Wall and the Antonine Wall have an extraordinarily high cultural value. They bear an exceptional testimony to the maximum extension of the power of the Roman Empire through the consolidation of its north-western frontiers and thus constitute a physical manifestation of Roman imperial policy. They illustrate the Roman Empire's ambition to dominate the world in order to establish its law and way of life there in a long-term perspective. They witness Roman colonization in the respective territories, the spread of Roman culture and its different traditions - military, engineering, architecture, religion management and politics - and the large number of human settlements associated with the defences which contribute to an understanding of how soldiers and their families lived in this part of the Roman Empire.

²¹ A fuller exposition of the OUV of the site can be found on the UNESCO website: <https://whc.unesco.org/>

Criterion (iv): *be an outstanding example of a type of building or architectural or technological ensemble or landscape which illustrates (a) significant stage(s) in human history*

The fortified German Limes, Hadrian's Wall and the Antonine Wall are outstanding examples of Roman military architecture and building techniques and of their technological development, perfected by engineers over the course of several generations. They demonstrate the variety and sophistication of the Romans' responses to the specific topography and climate as well as to the political, military and social circumstances in the north-western part of the Empire which spread all around Europe and thereby shaped much of the subsequent development in this part of the world.

Integrity

The inscribed components convey the extraordinary complexity and coherence of the Frontiers of the Roman Empire in northwestern Europe. Although some parts have been affected by land use change and natural processes, the integrity of the property is demonstrated through its visible remains and buried archaeological features. Their state of survival has been researched in many areas. Several areas of the frontier have been built over, but where significant archaeological remains have been proven to exist they have been included in the property.

Currently, about one-third of the linear barrier is visible; about one third lies in open countryside but is not visible above ground, though its existence has frequently been tested through excavation; about one-third lies in urban areas, though again its survival has been tested through excavation in many areas. About 2 km of the total length of the Antonine Wall have been totally destroyed, though to this sum should be added minor cuttings for roads and railways.

Authenticity

The inscribed component parts have a high level of authenticity, with each having been verified through extensive study and research. The materials and substance of underground archaeological remains are well-preserved, as are upstanding and visible remains. The form and design of each representative part of the frontier and its associated structures are clear and comprehensible. Later development overlying parts of the frontier are treated as vertical buffer zones.

The remains of the Antonine Wall exist in a generally good condition and visible sections sometimes have significant heights and depths. Conservation and consolidation measures that have been carried out in the interest of better understanding and protection fit in with the setting of the property and do not diminish its authenticity.

Protection and management requirements

At the time of inscription on the World Heritage List, the World Heritage Committee adopts a Statement of Outstanding Universal Value (SOUV) which will be the key reference for the future effective protection and management of the property. The FREWHS as a whole is collectively managed. At the international

level, the States Parties have established an integrated management system consisting of three closely cooperating and interacting bodies: the Inter-Governmental Committee (IGC) to oversee and coordinate the overall management at an international level; the Management group which assembles those directly responsible for the site management of the property and provides the primary mechanism for sharing best practice; The Bratislava Group, an international advisory body with expert members from States Parties with inscribed or potential parts of the Frontiers of the Roman Empire World Heritage property.

The Antonine Wall is protected by designation under the Ancient Monuments and Archaeological Areas Act 1979, and through the legislation that guide planning and development in Scotland - the Town and Country Planning (Scotland) Act 1997, the Planning etc. (Scotland) Act 2006 and the Planning (Listed Building and Conservation Areas) (Scotland) Act 1997. It is covered by national policy for the historic environment set out in the Scottish Historic Environment Policy and Scottish Planning Policy. Policies to protect, promote, conserve and enhance the property are included in local authority development plans and strategies, supported by Supplementary Guidance. Most of the Antonine Wall is in private ownership, but some sections are in the care of local authorities and Historic Environment Scotland.

APPENDIX 4: OVERVIEW AND INTRODUCTION TO THE ANTONINE WALL

The Antonine Wall is the remains of the Roman Empire's northwest frontier in the mid-second century. Stretching across central Scotland from the Firth of Forth to the Clyde, the Wall was constructed, in functional operation, and then abandoned all within a period of about twenty years between the early AD 140s to early 160s. The Antonine Wall was one component within a vast and varied system of linear frontiers established by Rome during the second century AD, and other examples are known from across Europe, the Near East, and North Africa. The most famous of these Roman frontiers is Hadrian's Wall in the north of present-day England, which preceded the Antonine Wall and served as a model for key components of its design. In 2008 the Antonine Wall was inscribed as a UNESCO World Heritage Site, joining Roman frontiers in England (Hadrian's Wall) and Germany (the Upper German-Raetian *Limes*) as the latest addition to the "Frontiers of the Roman Empire" serial trans-national World Heritage Site.

The Antonine Wall is about 41 miles (66km) long and features a range of linear features that are present along most of this length, which is punctuated by several types of installations of various purposes; the Wall was previously reported to have a length of 60km, but this has been amended by recent three-dimensional distance measurements based on analysis of recent LiDAR survey²². Although common perceptions of the term "wall" often revolve around an enclosing

²² Hannon forthcoming

structure or rampart – generally of timber, stone, or brick – the term “Antonine Wall” is used by scholars and heritage managers to refer to this full collection of inter-related features. Beyond the installations, the linear features of Rampart and Ditch are typically (and would have been in the Roman period) the most topographically visible elements of the frontier.

Linear Features

Note on nomenclature: The key linear features include the Rampart, Ditch, Berm, Outer Mound, and Military Way; these features are all presented in this document with an initial capital letter in order to avoid confusion between the main frontier’s Rampart and Ditch and those ramparts and ditches that surround the Wall’s installations.

The Rampart was a turf or earth/clay superstructure set atop a kerbed stone base, averaging 4.3–4.8m wide, and rising in a sloped fashion to a height of probably at least 3m. The best-preserved Rampart remains lie just west of Rough Castle fort (PIC175), where it survives to a height of only about 1.5–1.8m. Because the Rampart does not survive to its full height anywhere, we remain uncertain of how it was finished on top, but it was probably squared flat and may (although there is no direct evidence) have featured stakes set into the top or a wooden duckboard walk with a timber palisade. The Rampart’s superstructure differs to either side of Watling Lodge (PIC178 and PIC179), with stacked turves used from here westward and packed earth or clay revetted by clay or turf “cheeks” to the east.

The Berm represents the space between the Rampart and Ditch, and is relatively flat or gently slopes toward the Ditch to the north. The Berm is typically between 6–9m in width, but can vary widely, exceeding 30m at Croy Hill (PIC171); at some locations – usually in the eastern half of the frontier – series of pitted obstacles have been identified on the Berm, matching similar features also known from Hadrian’s Wall.

The Ditch is a monumental earthwork dug to the north of the Berm, with a V-shaped profile and banks cut at an angle of about 30 degrees, with evidence at some locations for large stones placed to strengthen its edges. Ditch size varies widely across three key sectors: generally between 6.1–10.7m wide to the east of Falkirk, an average of 12m wide and 4m deep between Falkirk and Bar Hill, and generally between 6.1–7.6m wide to the west of Bar Hill (PIC168); across its full length, the Ditch’s width ranges from a narrow 4.27m to as wide as 20.73m, although subsequent erosion must account for some of the wider widths, and it should be noted that the Ditch was not cut at all in a short section on Croy Hill (PIC171).

Immediately north of the Ditch lies the Outer Mound, occasionally called the “Upcast Mound” on the assumption that it is formed from material cast up from the digging of the Ditch. The Outer Mound is typically a low mound spread and partially leveled to a width of about 18–20m; this frequently serves to heighten the north face of the Ditch, and on north-facing slopes the Outer Mound was narrowed to further accentuate the Ditch.

The final linear feature is the Military Way, which was a Roman road located to the south of the Rampart, offering lateral communication and movement along the frontier; this was generally about 5–5.5m wide with a distinct camber and flanking ditches. The Military Way was typically situated between 36–46m south of the

Rampart and was usually connected to each fort's *via principalis*, with evidence at several sites (e.g. Rough Castle, PIC175; Croy Hill, PIC171) for an additional bypass road that provided movement without the need to enter the fort. At river crossings, the Military Way was provided with bridges, as confirmed at the river Kelvin near Balmuildy.

Installations

Installations can be grouped into five key types: forts, fortlets, expansions, minor enclosures, and possible watchtowers. Forts are the primary and largest installation type, with 17 forts currently known, ranging in size from 0.12–2.6ha. Although there is no set interval between forts, they are generally located about 3.5km apart, and it has long been assumed by many scholars that there may have been as many as 19 or 20 forts in total; given the long gaps between the forts at Carriden and Inveravon and those at Rough Castle (PIC175) and Castlecary (PIC170), it has been suggested that additional forts may have been located at Kinneil and Seabegs (near PIC176), but these sites have only provided evidence of fortlets rather than forts. The forts themselves were – like the Rampart – primarily constructed of turf and/or clay, with stone or timber internal buildings, and all but one (Bar Hill, PIC168; and possibly Carriden, if the Rampart did not reach that far east) were physically attached to the Rampart. Whilst the majority of forts were defended by turf or clay ramparts, those at Castlecary (PIC170) and Balmuildy featured stone defences. Most forts have also been found to include an additional fortified space, traditionally called an “annexe”. The precise purpose and nature of these annexes remains uncertain, but they are likely to have been later additions and not part of the original plan; in some cases the annexe is significantly larger in area than the fort itself.

Fortlets were smaller enclosures attached to the rear (i.e. south side) of the Rampart, and were first formally identified during excavations at Duntocher in 1949; the fortlet at Watling Lodge (between PIC178 and PIC179) had been initially described in the 1720s but was only recognised as a fortlet after the discovery at Duntocher. Similar in design and construction to the Antonine Wall forts, they measure about 21m x 18m and were constructed with turf ramparts on stone bases, with small timber barrack-blocks to house the soldiers stationed within them. All known Antonine Wall fortlets had a south and north gate, the latter opening through the Rampart. These northern gateways are problematic, as only the fortlet at Watling Lodge (between PIC178 and PIC179) has provided clear evidence for a causeway across the Ditch. Although tentative traces of a possible causeway that was later removed were identified at Kinneil fortlet, it appears that most Antonine Wall fortlets either did not provide access to the north of the frontier or that a decision was made during the frontier's short functional lifespan to eliminate these original access points; this latter view may be further supported by tentative evidence at Kinneil and Seabegs Wood (PIC176) that the north gateways of these fortlets may have been narrowed or removed. Fortlets are known from across the Roman Empire, with others on Hadrian's Wall known as “milecastles” because of their regular spacing at approximately one Roman mile intervals. Searches in the 1970s for fortlets on the Antonine Wall succeeded in identifying some examples at Kinneil, Seabegs Wood (PIC176), Croy Hill (PIC171), Summerston, and Cleddans. If a model of a regular series of fortlets at about one Roman mile intervals is proposed, a total of 41 fortlets would be expected; to date,

only nine have been definitively identified, and investigations at proposed additional fortlet locations have either provided negative or inconclusive results.

Expansions are represented by roughly square southern extensions of the Antonine Wall Rampart, constructed of turf on a cobble stone base and about 5.2m square. Six examples are currently known, all occurring in pairs located close together; two pairs are located to either side of Rough Castle fort (PIC175), called (to the east of Rough Castle) Tentfield East/West and (to the west of Rough Castle) Bonnyside East/West, whilst a third pair is located on the western slope of Croy Hill (PIC171). The functions of these installations are uncertain, but one interpretation is that they served as signalling platforms, with some evidence of burnt material recorded at Bonnyside East. This type of installation is unknown on other Roman frontiers, and may have been a unique innovation for the Antonine Wall, serving a similar function to towers or “turrets” known from Hadrian’s Wall and the Antonine frontier in Germany.

Minor Enclosures are known at three locations along the frontier, all in the vicinity of the fortlet at Wilderness Plantation, and each identified via aerial photography. They are sub-rectangular and ditched, attached to the rear of the frontier’s Rampart. Only one (Wilderness West) has been excavated, revealing that it is later than the Rampart, and had an internal area of about 5.5m square; no entrance or internal surfaces or structures were identified. Although these appear to have been designed as permanent features, their precise function remains uncertain.

Watchtowers may have existed along the Antonine Wall, as they are known from other Roman frontiers, but no definitive evidence for this type of installation has been uncovered. The minor enclosures near Wilderness Plantation do not appear to feature structural evidence for towers, and other possible watchtowers suggested at Garnhall (PIC173) and Callendar Park require more substantiation before they can be accepted as definitively representing this type of installation.

When all of these features are taken into account, the Antonine Wall was one of the biggest ever engineering projects to be undertaken within central Scotland, and the digging of the Ditch particularly altered the local topography, with continuing implications for later periods. Currently, about one-third of the linear barrier is visible; about one third lies in open countryside but is not visible above ground, though its existence has frequently been tested through excavation; about one-third lies in urban areas, though again its survival has been tested through excavation in many areas. Only about 2 km of the total length of the Antonine Wall have been totally destroyed, though to this sum should be added minor cuttings for roads and railways.

The Antonine Wall provides significant evidence for the activities of the Roman military during the mid-second century AD. Structural remains provide evidence for the advanced degree of complexity in Roman frontier planning and construction, with the most complicated array of interlinked elements known from any Roman frontier. The short functional lifespan of the Wall – only about 20 years in total, a generation – makes this frontier particularly valuable as a dated horizon that is relatively unencumbered by the wide range of significant alterations that complicate the functional histories of longer-lived frontiers elsewhere in the Empire. Artefacts inform us about production and procurement and daily life and society on this particular edge of the Empire, offering crucial comparative

collections to assemblages from both the Empire's other frontier zones and areas that were closer to the Empire's cultural and political centre. Inscriptions also add a very valuable dimension that allows for the identification of specific military units, and, in some cases, even named individuals. The most important set of inscriptions are the Distance Slabs: at least 19 sculpted and inscribed sandstone blocks that record the work of building the frontier (perhaps the Rampart itself) by different legions, and which have been identified at various locations along the Wall.

The Antonine Wall's Abandonment and Later History

Around the late AD 150s / early 160s the Antonine Wall was abandoned by the Roman army, who moved south to the line of Hadrian's Wall and its outpost forts. Evidence from some sites, notably Old Kilpatrick and Bar Hill (PIC168), indicate that the frontier's installations were deliberately demolished and ritually decommissioned in advance of the redeployment south. Although the Roman army would return to the area during the early third century campaigns of Septimius Severus, there is no evidence that the Antonine Wall was brought back into functional operation or reoccupied by Roman forces.

Active research and fieldwork on the Antonine Wall has, not surprisingly, focused almost entirely on its Roman period construction, functional operation, and abandonment. There is, therefore, significantly less detailed knowledge of the Wall's post-Roman history. A possible souterrain at Shirva, in the Wall's central sector midway between the forts of Auchendavy and Bar Hill (PIC168), may represent the earliest post-Roman settlement activity on the former Roman frontier and could have been in operation from very soon after the Roman withdrawal until as late as the AD 220s. Although the Antonine Wall had ceased to function as a frontier of the Roman Empire, it would continue to play a role in subsequent settlement and other activities in the region.

It appears likely that the Forth-Clyde isthmus served as an effective border in the early medieval period, separating the Anglo-Saxons and Picts in the east, while to the west the successive British kingdoms of Alt Clut and Strathclyde straddled the line of the former Roman frontier. Whether or not the Antonine Wall was itself utilised or recognised as a geopolitical or cultural barrier in this context, its continued visibility would have served to underscore the transitional nature of the isthmus in this period. Timber structures located along the Wall in the area of Falkirk – a ninth-century hall possibly associated with the Thanes of Callendar at Callendar Park and another large structure east of the fort at Mumrills – may represent examples of early medieval reuse of the Wall's line as a regional power centre²³.

Castles or mottes were also constructed on the line of the Wall in the Norman and later medieval period at Inveravon, Watling Lodge (PIC178 and PIC179), Seabegs (near PIC176), Kirkintilloch, and Cadder, each using some aspect of the Roman frontier as part of its own defences. These are part of a wider regional collection of medieval period fortified sites and may not necessarily reflect a conscious decision to reuse former Roman military sites. They do, however, reflect these particular locations' continued relevance and significance as powerful places within a medieval landscape and this later reuse does not detract from the sites'

²³ For further discussion, see: Maldonado 2015

association with the Roman frontier, but adds further depth to their accumulated meanings and significances within the present. It is in this period when the Wall is first recorded (by John of Fordun) as bearing the name “Grymysdyke,” later modified to “Graham’s Dyke,” and still reflected within modern street names in the eastern half of the Wall’s line.

In the late seventeenth century the Wall began to attract serious antiquarian attention and was visited and discussed in some depth through the eighteenth century by antiquaries such as Sir Robert Sibbald, Alexander Gordon, and the Rev. John Horsley, amongst others. These antiquaries provided valuable early documentation of the Wall and its remains before the extensive industrialisation and development of the Wall’s corridor from the late eighteenth century onward. Such works included the controversial dismantling of Arthur’s O’on by Michael Bruce of Stenhouse in 1743, using the masonry from the possible Roman temple in the construction of a dam on the Carron²⁴. Numerous other areas of the Wall also fell prey to quarrying and agricultural “improvements”, and the wider Antonine Wall corridor played an important role in the Industrial Revolution, with the formation of the Carron Iron Works, construction of the canals, steam engine experiments by James Watt at Kinneil, increased mining and factory production, and the building of the railways. The Forth-Clyde Canal was particularly important, criss-crossing the former Roman frontier multiple times and running parallel to it for long stretches; while the construction of the canal extensively damaged large portions of the Wall, it also revealed significant information and provided the context for later antiquarian activities and the transition to formalised archaeological societies and – by the 1890s – more scientific exploration.

²⁴ See <https://canmore.org.uk/site/46950/arthurs-oon-stenhouse>