

Bonawe Iron Furnace

ABC Quiz

As you explore the iron furnace, find the answers to these questions. Remember to ask a steward if you need any help.



1

Where did the iron masters who set up Bonawe come from?

- a. Scotland
- b. England
- c. Ireland



2

Which two types of tree were usually used for making charcoal?

- a. oak and beech
- b. birch and beech
- c. oak and birch



3

During the summer, how many people were employed in the forest making charcoal?

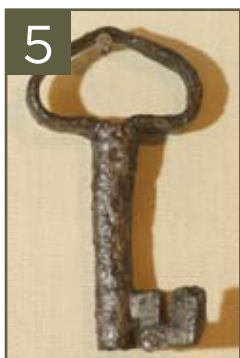
- a. up to 600
- b. up to 500
- c. up to 4000



4

How many acres of woodland were needed to make the amount of pig iron produced at Bonawe each year?

- a. 5000 acres
- b. 10,000 acres
- c. 20,000 acres



5

When was iron first made?

- a. about 3000 years ago
- b. about 2000 years ago
- c. about 4000 years ago



6

What were the bellows made from?

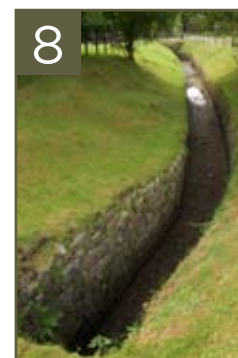
- a. iron
- b. leather
- c. wood



7

What name was stamped on iron that came from Bonawe?

- a. Bonawe
- b. Newland
- c. Lorn



8

What is the channel called which takes water from the river to the waterwheel?

- a. canal
- b. lade
- c. barrel

