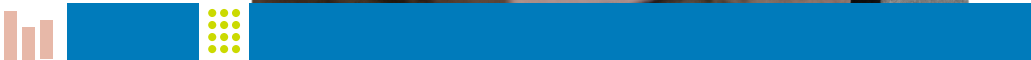


THE SKILLS INVESTMENT PLAN FOR SCOTLAND'S HISTORIC ENVIRONMENT

A visual summary



**Our Past
Our Future**

VISUALISING THE SKILLS INVESTMENT PLAN

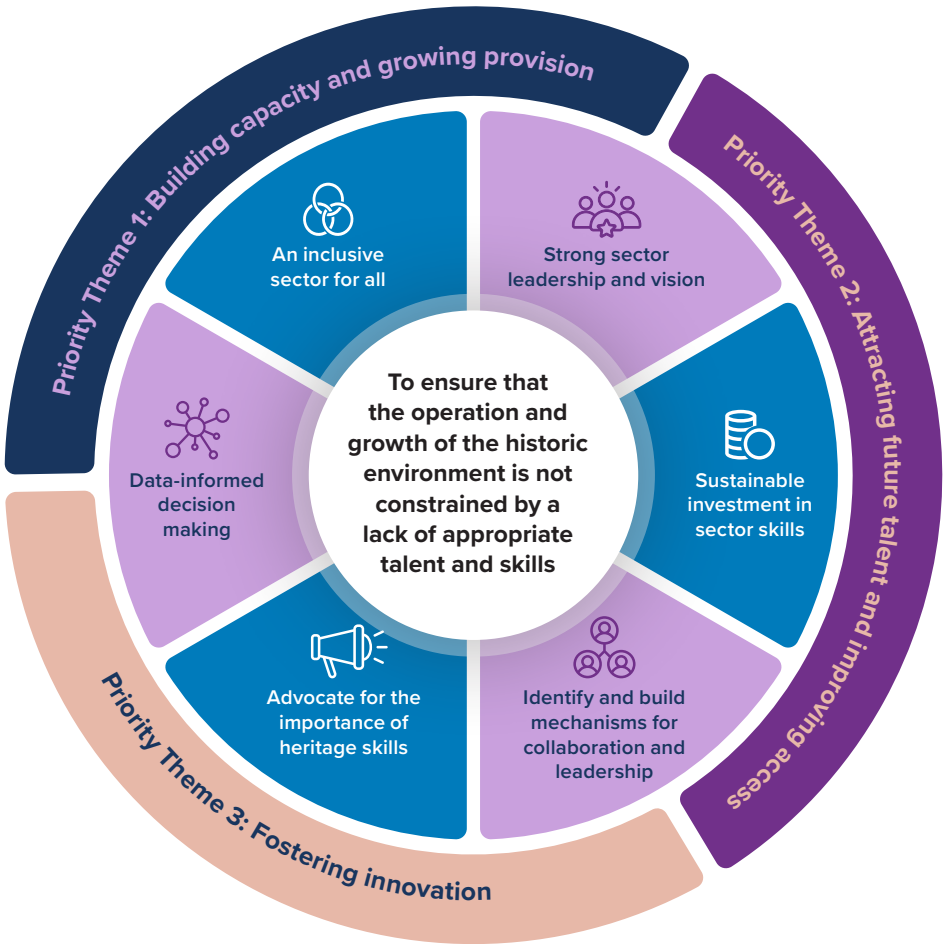


Diagram showing the overarching goal, principles and priorities.

TEN PILLARS



Archaeology



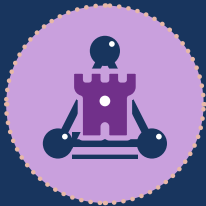
**Architecture,
engineering,
planning &
surveying in a
heritage context**



**Archives and
libraries**



**Conservation of
art and artefacts**



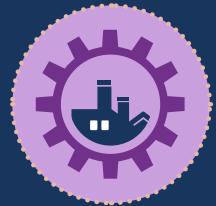
**Heritage
science**



**Heritage
tourism**



**Historic
landscapes and
gardens**



**Industrial
heritage**



**Museums and
galleries**



**Traditional
building skills
and materials**

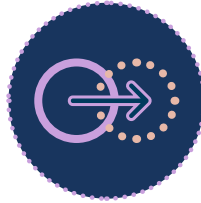
IN FOCUS



Securing sustainable resources



Strong sector leadership



Collaboration and alignment



Data-informed decision making and reporting



Advocacy



Stabilising, maintaining and growing specialist technical skills



Accreditation and standards



Attracting future talent and developing inclusive progressive pathways



Accessibility of CPD



Improving digital literacy, application and solutions



Skills to address the climate crisis

SIP IN FOCUS

Building capacity and growing provision	Attracting future talent and improving access	Fostering innovation
<ul style="list-style-type: none">• Develop a framework for succession planning and knowledge sharing• Align, develop and accredit progressive CPD provision considering regional accessibility• Build conservation awareness in key stakeholders• Build capacity in the sector to deliver training• Support sustainable organisations	<ul style="list-style-type: none">• Promote the sector as an attractive place to work• Create recognised pathways into and across the sector for all• Create employability opportunities to support those furthest from the workforce	<ul style="list-style-type: none">• Building skills to support net zero mitigation and adaption• Fostering digital literacy and digital innovation• Creating skills outputs from research outcomes





HISTORIC ENVIRONMENT SCOTLAND

ÀRAINNEACHD EACHDRAIDHEL ALBA



Scottish Government
Riaghaltas na h-Alba
gov.scot



SCOTTISH TOURISM ALLIANCE
Your voice in tourism matters



Museums Galleries Scotland
Supporting Scotland's Museums

Landscape Institute
Inspiring great places



CILIPS Scotland's library and information professionals

ARA Archives & Records Association UK & Ireland



OGL

You may re-use this information (excluding logos and images) free of charge in any format or medium, under the terms of the Open Government Licence v3.0 except where otherwise stated.

Any enquiries regarding this document should be sent to us at:

Historic Environment Scotland
Longmore House
Salisbury Place
Edinburgh
EH9 1SH
+44 (0) 131 668 8600
www.historicenvironment.scot

You can download this publication from our website at www.historicenvironment.scot